

Septin 14 rabbit pAb

Cat No.:ES5840

For research use only

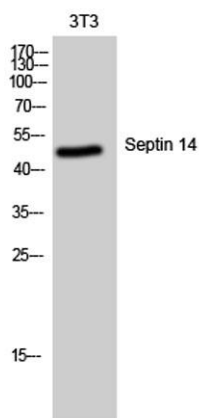
Overview

Product Name	Septin 14 rabbit pAb
Host species	Rabbit
Applications	WB;IHC
Species Cross-Reactivity	Human;Rat;Mouse;
Recommended dilutions	WB 1:500-2000;IHC-p 1:50-300
Immunogen	The antiserum was produced against synthesized peptide derived from human SEPT14. AA range:341-390
Specificity	Septin 14 Polyclonal Antibody detects endogenous levels of Septin 14 protein.
Formulation	Liquid in PBS containing 50% glycerol, 0.5% BSA and 0.02% sodium azide.
Storage	Store at -20°C. Avoid repeated freeze-thaw cycles.
Protein Name	Septin-14
Gene Name	SEPT14
Cellular localization	Cytoplasm . Cytoplasm, cytoskeleton . Cell projection, axon . Cell projection, dendrite . Perikaryon . Cytoplasm, perinuclear region . Cytoplasmic vesicle, secretory vesicle, acrosome . Colocalizes with actin stress fibers (PubMed:17922164). Expressed in the perinuclear rim and manchette structure in early elongating spermatids during spermiogenesis (By similarity). .
Purification	The antibody was affinity-purified from rabbit antiserum by affinity-chromatography using epitope-specific immunogen.
Clonality	Polyclonal
Concentration	1 mg/ml
Observed band	50kD
Human Gene ID	346288
Human Swiss-Prot Number	Q6ZU15
Alternative Names	SEPT14; Septin-14
Background	SEPT14 is a member of the highly conserved septin

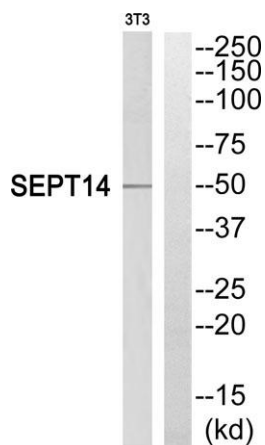


family of GTP-binding cytoskeletal proteins implicated in membrane transport, apoptosis, cell polarity, cell cycle regulation, cytokinesis, and other cellular functions (Peterson et al., 2007 [PubMed 17922164]).[supplied by OMIM, Jul 2008],

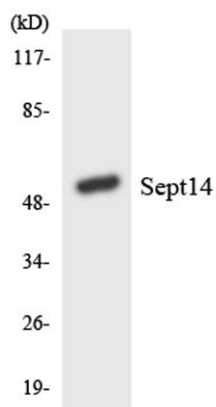
Western Blot analysis of 3T3 cells using Septin 14 Polyclonal Antibody



Western blot analysis of SEPT14 Antibody. The lane on the right is blocked with the SEPT14 peptide.

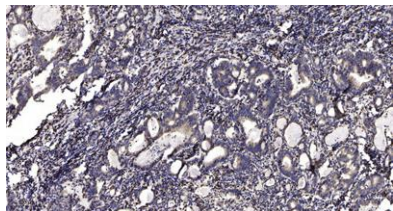


Western blot analysis of the lysates from Jurkat cells using SEPT14 antibody.





ELK Biotechnology



Immunohistochemical analysis of paraffin-embedded human Gastric adenocarcinoma. 1, Antibody was diluted at 1:200(4° overnight). 2, Tris-EDTA,pH9.0 was used for antigen retrieval. 3,Secondary antibody was diluted at 1:200(room temperature, 45min).



+86-27-59760950

ELKbio@ELKbiotech.com

www.elkbiotech.com

23-2, No.388 Gaoxin 2nd Road,Wuhan East Lake Hi-tech Development Zone, Hubei , P.R.C