

CYP26C1 rabbit pAb

Cat No.:ES5819

For research use only

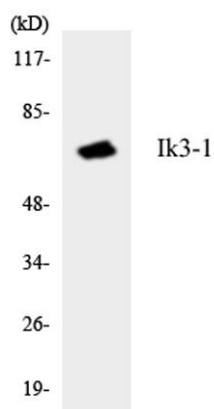
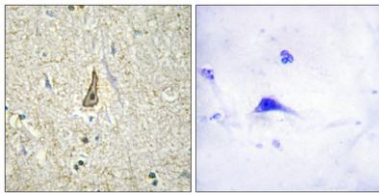
Overview

Product Name	CYP26C1 rabbit pAb
Host species	Rabbit
Applications	IHC;IF;ELISA
Species Cross-Reactivity	Human;Rat;Mouse;
Recommended dilutions	Immunohistochemistry: 1/100 - 1/300. ELISA: 1/40000. Not yet tested in other applications.
Immunogen	The antiserum was produced against synthesized peptide derived from human CYP26C1. AA range:41-90
Specificity	CYP26C1 Polyclonal Antibody detects endogenous levels of CYP26C1 protein.
Formulation	Liquid in PBS containing 50% glycerol, 0.5% BSA and 0.02% sodium azide.
Storage	Store at -20°C. Avoid repeated freeze-thaw cycles.
Protein Name	Cytochrome P450 26C1
Gene Name	CYP26C1
Cellular localization	Membrane ; Single-pass membrane protein .
Purification	The antibody was affinity-purified from rabbit antiserum by affinity-chromatography using epitope-specific immunogen.
Clonality	Polyclonal
Concentration	1 mg/ml
Observed band	
Human Gene ID	340665
Human Swiss-Prot Number	Q6V0L0
Alternative Names	CYP26C1; Cytochrome P450 26C1
Background	cytochrome P450 family 26 subfamily C member 1(CYP26C1) Homo sapiens This gene encodes a member of the cytochrome P450 superfamily of enzymes. The cytochrome P450 proteins are monooxygenases which catalyze many reactions involved in drug metabolism and synthesis of cholesterol, steroids and other lipids. This enzyme is



involved in the catabolism of all-trans- and 9-cis-retinoic acid, and thus contributes to the regulation of retinoic acid levels in cells and tissues. This gene is adjacent to a related gene on chromosome 10q23.33. [provided by RefSeq, Jul 2008],

Immunohistochemistry analysis of paraffin-embedded human brain, using Cytochrome P450 26C1 Antibody. The picture on the right is blocked with the synthesized peptide.



Western blot analysis of the lysates from HeLa cells using Ik3-1 antibody.

