

GPR100 rabbit pAb

Cat No.:ES5814

For research use only

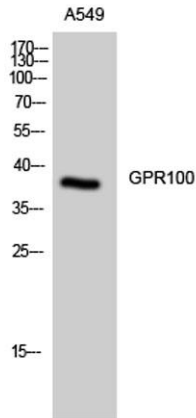
Overview

Product Name	GPR100 rabbit pAb
Host species	Rabbit
Applications	WB;IF;ELISA
Species Cross-Reactivity	Human;Rat;Mouse;
Recommended dilutions	Western Blot: 1/500 - 1/2000. Immunofluorescence: 1/200 - 1/1000. ELISA: 1/20000. Not yet tested in other applications.
Immunogen	The antiserum was produced against synthesized peptide derived from human GPR100. AA range:321-370
Specificity	GPR100 Polyclonal Antibody detects endogenous levels of GPR100 protein.
Formulation	Liquid in PBS containing 50% glycerol, 0.5% BSA and 0.02% sodium azide.
Storage	Store at -20°C. Avoid repeated freeze-thaw cycles.
Protein Name	Relaxin-3 receptor 2
Gene Name	RXFP4
Cellular localization	Cell membrane; Multi-pass membrane protein.
Purification	The antibody was affinity-purified from rabbit antiserum by affinity-chromatography using epitope-specific immunogen.
Clonality	Polyclonal
Concentration	1 mg/ml
Observed band	38kD
Human Gene ID	339403
Human Swiss-Prot Number	Q8TDU9
Alternative Names	RXFP4; GPR100; RLN3R2; Relaxin-3 receptor 2; RLN3 receptor 2; G-protein coupled receptor 100; G-protein coupled receptor GPCR142; Insulin-like peptide INSL5 receptor; Relaxin family peptide receptor 4
Background	GPR100 is a member of the rhodopsin family of G protein-coupled receptors (GPRs) (Fredriksson et al.,

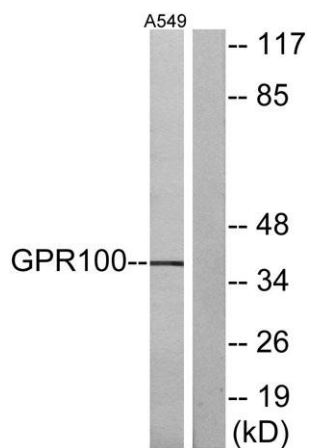
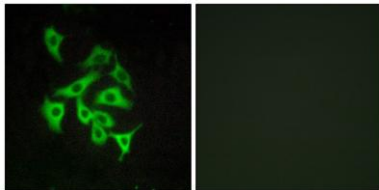


2003 [PubMed 14623098]).[supplied by OMIM, Mar 2008],

Western Blot analysis of A549 cells using GPR100 Polyclonal Antibody



Immunofluorescence analysis of A549 cells, using GPR100 Antibody. The picture on the right is blocked with the synthesized peptide.



Western blot analysis of lysates from A549 cells, using GPR100 Antibody. The lane on the right is blocked with the synthesized peptide.

