



SR-2A rabbit pAb

Cat No.:ES5800

For research use only

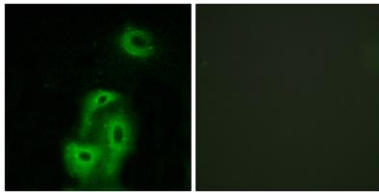
Overview

| | |
|--------------------------|--|
| Product Name | SR-2A rabbit pAb |
| Host species | Rabbit |
| Applications | IHC;IF;ELISA |
| Species Cross-Reactivity | Human;Rat;Mouse; |
| Recommended dilutions | Immunohistochemistry: 1/100 - 1/300. Immunofluorescence: 1/200 - 1/1000. ELISA: 1/5000. Not yet tested in other applications. |
| Immunogen | The antiserum was produced against synthesized peptide derived from human 5-HT-2A. AA range:422-471 |
| Specificity | SR-2A Polyclonal Antibody detects endogenous levels of SR-2A protein. |
| Formulation | Liquid in PBS containing 50% glycerol, 0.5% BSA and 0.02% sodium azide. |
| Storage | Store at -20°C. Avoid repeated freeze-thaw cycles. |
| Protein Name | 5-hydroxytryptamine receptor 2A |
| Gene Name | HTR2A |
| Cellular localization | Cell membrane ; Multi-pass membrane protein . Cell projection, dendrite . Cell projection, axon . Cytoplasmic vesicle . Membrane, caveola . Cell junction, synapse, presynapse . |
| Purification | The antibody was affinity-purified from rabbit antiserum by affinity-chromatography using epitope-specific immunogen. |
| Clonality | Polyclonal |
| Concentration | 1 mg/ml |
| Observed band | |
| Human Gene ID | 3356 |
| Human Swiss-Prot Number | P28223 |
| Alternative Names | HTR2A; HTR2; 5-hydroxytryptamine receptor 2A; 5-HT-2; 5-HT-2A; Serotonin receptor 2A |
| Background | This gene encodes one of the receptors for serotonin, a neurotransmitter with many roles. |



Mutations in this gene are associated with susceptibility to schizophrenia and obsessive-compulsive disorder, and are also associated with response to the antidepressant citalopram in patients with major depressive disorder (MDD). MDD patients who also have a mutation in intron 2 of this gene show a significantly reduced response to citalopram as this antidepressant downregulates expression of this gene. Multiple transcript variants encoding different isoforms have been found for this gene. [provided by RefSeq, Sep 2009],

Immunofluorescence analysis of A549 cells, using 5-HT-2A Antibody. The picture on the right is blocked with the synthesized peptide.



Immunohistochemistry analysis of paraffin-embedded human brain tissue, using 5-HT-2A Antibody. The picture on the right is blocked with the synthesized peptide.

