

FoxN2 rabbit pAb

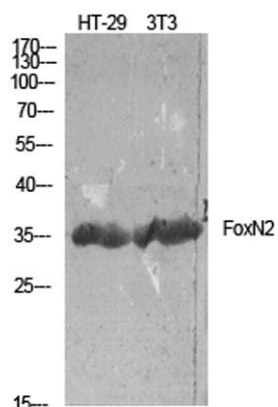
Cat No.:ES5797

For research use only

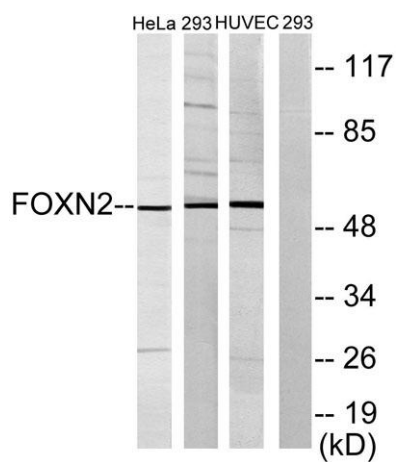
Overview

Product Name	FoxN2 rabbit pAb
Host species	Rabbit
Applications	WB;IHC;IF;ELISA
Species Cross-Reactivity	Human;Rat;Mouse;
Recommended dilutions	Western Blot: 1/500 - 1/2000. Immunohistochemistry: 1/100 - 1/300. ELISA: 1/20000. Not yet tested in other applications.
Immunogen	The antiserum was produced against synthesized peptide derived from human FOXN2. AA range:341-390
Specificity	FoxN2 Polyclonal Antibody detects endogenous levels of FoxN2 protein.
Formulation	Liquid in PBS containing 50% glycerol, 0.5% BSA and 0.02% sodium azide.
Storage	Store at -20°C. Avoid repeated freeze-thaw cycles.
Protein Name	Forkhead box protein N2
Gene Name	FOXN2
Cellular localization	Nucleus.
Purification	The antibody was affinity-purified from rabbit antiserum by affinity-chromatography using epitope-specific immunogen.
Clonality	Polyclonal
Concentration	1 mg/ml
Observed band	36kD
Human Gene ID	3344
Human Swiss-Prot Number	P32314
Alternative Names	FOXN2; HTLF; Forkhead box protein N2; Human T-cell leukemia virus enhancer factor
Background	This gene encodes a forkhead domain binding protein and may function in the transcriptional regulation of the human T-cell leukemia virus long terminal repeat. [provided by RefSeq, Jul 2008],

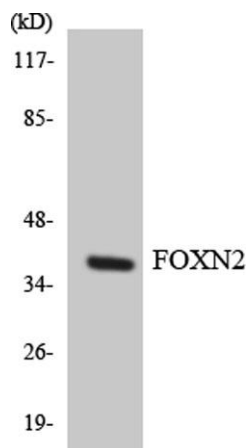




Western Blot analysis of HT-29/NIH-3T3 using FoxN2 Polyclonal Antibody.



Western blot analysis of lysates from HeLa, 293, and HUVEC cells, using FOXN2 Antibody. The lane on the right is blocked with the synthesized peptide.

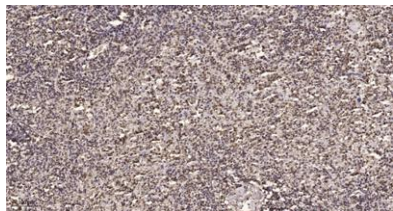


Western blot analysis of the lysates from K562 cells using FOXN2 antibody.





ELK Biotechnology



Immunohistochemical analysis of paraffin-embedded human spleen. 1, Tris-EDTA,pH9.0 was used for antigen retrieval. 2 Antibody was diluted at 1:200(4° overnight.3,Secondary antibody was diluted at 1:200(room temperature, 45min).



+86-27-59760950

ELKbio@ELKbiotech.com

www.elkbiotech.com

23-2, No.388 Gaoxin 2nd Road,Wuhan East Lake Hi-tech Development Zone, Hubei , P.R.C