



HSF2 rabbit pAb

Cat No.:ES5785

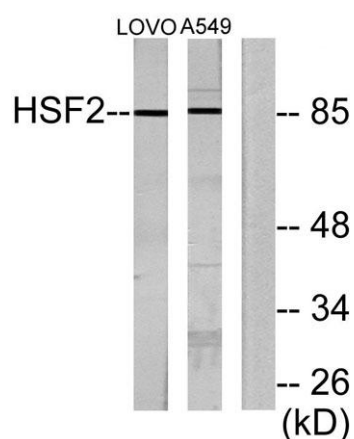
For research use only

Overview

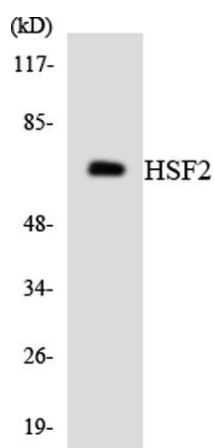
Product Name	HSF2 rabbit pAb
Host species	Rabbit
Applications	WB;IHC;IF;ELISA
Species Cross-Reactivity	Human;Mouse;Rat
Recommended dilutions	Western Blot: 1/500 - 1/2000. Immunohistochemistry: 1/100 - 1/300. ELISA: 1/20000. Not yet tested in other applications.
Immunogen	The antiserum was produced against synthesized peptide derived from human HSF2. AA range:401-450
Specificity	HSF2 Polyclonal Antibody detects endogenous levels of HSF2 protein.
Formulation	Liquid in PBS containing 50% glycerol, 0.5% BSA and 0.02% sodium azide.
Storage	Store at -20°C. Avoid repeated freeze-thaw cycles.
Protein Name	Heat shock factor protein 2
Gene Name	HSF2
Cellular localization	Cytoplasm . Nucleus . Cytoplasmic during normal growth and moves to the nucleus upon activation.
Purification	The antibody was affinity-purified from rabbit antiserum by affinity-chromatography using epitope-specific immunogen.
Clonality	Polyclonal
Concentration	1 mg/ml
Observed band	85kD
Human Gene ID	3298
Human Swiss-Prot Number	Q03933
Alternative Names	HSF2; HSTF2; Heat shock factor protein 2; HSF 2; Heat shock transcription factor 2; HSTF 2
Background	heat shock transcription factor 2(HSF2) Homo sapiens The protein encoded by this gene belongs to the HSF family of transcription factors that bind specifically to the heat-shock promoter



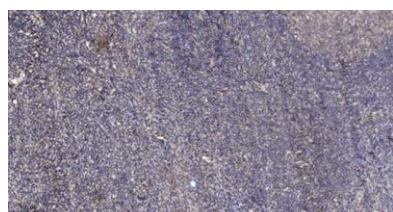
element and activate transcription. Heat shock transcription factors activate heat-shock response genes under conditions of heat or other stresses. Alternatively spliced transcript variants encoding different isoforms have been found for this gene. [provided by RefSeq, Jul 2011],



Western blot analysis of lysates from LOVO and A549 cells, using HSF2 Antibody. The lane on the right is blocked with the synthesized peptide.



Western blot analysis of the lysates from HeLa cells using HSF2 antibody.



Immunohistochemical analysis of paraffin-embedded human tonsil. 1, Antibody was diluted at 1:200(4° overnight). 2, Tris-EDTA,pH9.0 was used for antigen retrieval. 3,Secondary antibody was diluted at 1:200(room temperature, 45min).

