



Rabr rabbit pAb

Cat No.:ES5775

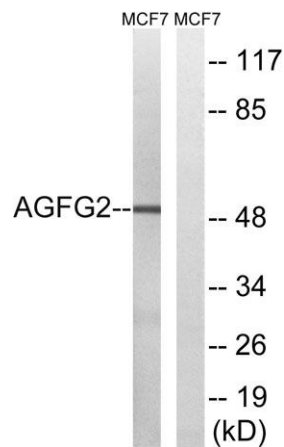
For research use only

Overview

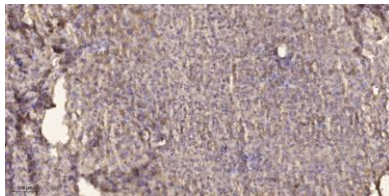
| | |
|--------------------------|--------------------------------------------------------------------------------------------------------------------------------------------------------------------------------------------------------------------------------------------------|
| Product Name | Rabr rabbit pAb |
| Host species | Rabbit |
| Applications | WB;ELISA;IHC |
| Species Cross-Reactivity | Human;Mouse |
| Recommended dilutions | WB 1:500-2000;IHC-p 1:50-300; ELISA 2000-20000 |
| Immunogen | The antiserum was produced against synthesized peptide derived from human AGFG2. AA range:91-140 |
| Specificity | Rabr Polyclonal Antibody detects endogenous levels of Rabr protein. |
| Formulation | Liquid in PBS containing 50% glycerol, 0.5% BSA and 0.02% sodium azide. |
| Storage | Store at -20°C. Avoid repeated freeze-thaw cycles. |
| Protein Name | Arf-GAP domain and FG repeat-containing protein 2 |
| Gene Name | AGFG2 |
| Cellular localization | membrane, |
| Purification | The antibody was affinity-purified from rabbit antiserum by affinity-chromatography using epitope-specific immunogen. |
| Clonality | Polyclonal |
| Concentration | 1 mg/ml |
| Observed band | 49kD |
| Human Gene ID | 3268 |
| Human Swiss-Prot Number | O95081 |
| Alternative Names | AGFG2; HRBL; RABR; Arf-GAP domain and FG repeat-containing protein 2; HIV-1 Rev-binding protein-like protein; Rev/Rex activation domain-binding protein related; RAB-R |
| Background | ArfGAP with FG repeats 2(AGFG2) Homo sapiens This gene is a member of the HIV-1 Rev binding protein (HRB) family and encodes a protein with one Arf-GAP zinc finger domain, several phe-gly (FG) motifs, and four asn-pro-phe (NPF) motifs. This |



protein interacts with Eps15 homology (EH) domains and plays a role in the Rev export pathway, which mediates the nucleocytoplasmic transfer of proteins and RNAs. Alternatively spliced transcript variants have been described, but their biological validity has not been determined. [provided by RefSeq, Feb 2013],



Western blot analysis of lysates from MCF-7 cells, using AGFG2 Antibody. The lane on the right is blocked with the synthesized peptide.



Immunohistochemical analysis of paraffin-embedded human liver cancer. 1, Antibody was diluted at 1:200(4° overnight). 2, Tris-EDTA,pH9.0 was used for antigen retrieval. 3,Secondary antibody was diluted at 1:200(room temperature, 45min).

