

Neuregulin-1 SMDF rabbit pAb

Cat No.:ES5736

For research use only

Overview

Product Name	Neuregulin-1 SMDF rabbit pAb
Host species	Rabbit
Applications	WB;IHC;IF;ELISA
Species Cross-Reactivity	Human;Mouse;Rat
Recommended dilutions	Western Blot: 1/500 - 1/2000. Immunohistochemistry: 1/100 - 1/300. Immunofluorescence: 1/200 - 1/1000. ELISA: 1/10000. Not yet tested in other applications.
Immunogen	The antiserum was produced against synthesized peptide derived from human NRG1 isoform-10. AA range:1-50
Specificity	Neuregulin-1 SMDF Polyclonal Antibody detects endogenous levels of Neuregulin-1 SMDF protein.
Formulation	Liquid in PBS containing 50% glycerol, 0.5% BSA and 0.02% sodium azide.
Storage	Store at -20°C. Avoid repeated freeze-thaw cycles.
Protein Name	Pro-neuregulin-1 membrane-bound isoform
Gene Name	NRG1
Cellular localization	[Pro-neuregulin-1, membrane-bound isoform]: Cell membrane; Single-pass type I membrane protein. Does not seem to be active.; [Neuregulin-1]: Secreted.; [Isoform 8]: Nucleus. May be nuclear.; [Isoform 9]: Secreted. Has a signal peptide.; [Isoform 10]: Memb
Purification	The antibody was affinity-purified from rabbit antiserum by affinity-chromatography using epitope-specific immunogen.
Clonality	Polyclonal
Concentration	1 mg/ml
Observed band	44kD
Human Gene ID	3084
Human Swiss-Prot Number	Q02297-10
Alternative Names	Pro-neuregulin-1 membrane-bound isoform;

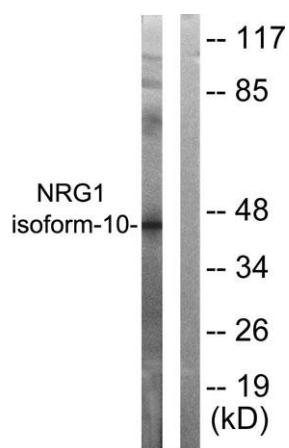
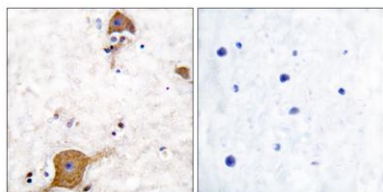




Background

Pro-NRG1; NRG1; GGF; HGL; HRGA; NDF; SMDF
The protein encoded by this gene is a membrane glycoprotein that mediates cell-cell signaling and plays a critical role in the growth and development of multiple organ systems. An extraordinary variety of different isoforms are produced from this gene through alternative promoter usage and splicing. These isoforms are expressed in a tissue-specific manner and differ significantly in their structure, and are classified as types I, II, III, IV, V and VI. Dysregulation of this gene has been linked to diseases such as cancer, schizophrenia, and bipolar disorder (BPD). [provided by RefSeq, Apr 2016],

Immunohistochemistry analysis of paraffin-embedded human brain tissue, using NRG1 isoform-10 Antibody. The picture on the right is blocked with the synthesized peptide.



Western blot analysis of lysates from SKOV3 cells, using NRG1 isoform-10 Antibody. The lane on the right is blocked with the synthesized peptide.

