

Mic-1 rabbit pAb

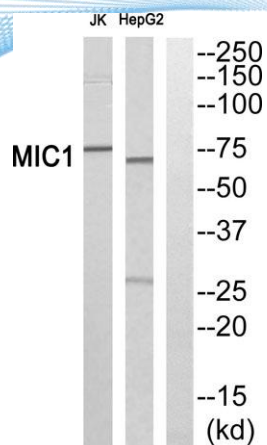
Cat No.:ES5699

For research use only

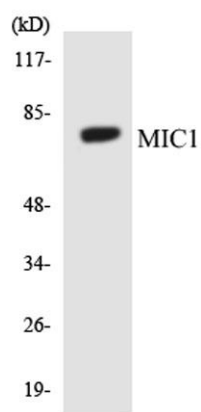
Overview

Product Name	Mic-1 rabbit pAb
Host species	Rabbit
Applications	WB;ELISA;IHC
Species Cross-Reactivity	Human;Mouse
Recommended dilutions	WB 1:500-2000;IHC-p 1:50-300; ELISA 2000-20000
Immunogen	The antiserum was produced against synthesized peptide derived from human MIC1. AA range:591-640
Specificity	Mic-1 Polyclonal Antibody detects endogenous levels of Mic-1 protein.
Formulation	Liquid in PBS containing 50% glycerol, 0.5% BSA and 0.02% sodium azide.
Storage	Store at -20°C. Avoid repeated freeze-thaw cycles.
Protein Name	Uncharacterized protein C18orf8
Gene Name	C18orf8
Cellular localization	Lysosome membrane . Late endosome membrane .
Purification	The antibody was affinity-purified from rabbit antiserum by affinity-chromatography using epitope-specific immunogen.
Clonality	Polyclonal
Concentration	1 mg/ml
Observed band	75kD
Human Gene ID	29919
Human Swiss-Prot Number	Q96DM3
Alternative Names	C18orf8; MIC1; Uncharacterized protein C18orf8; Colon cancer-associated protein Mic1; Mic-1
Background	This gene encodes a colon cancer associated protein. [provided by RefSeq, Jan 2013],

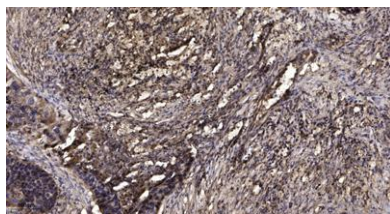




Western blot analysis of MIC1 Antibody. The lane on the right is blocked with the MIC1 peptide.



Western blot analysis of the lysates from HeLa cells using MIC1 antibody.



Immunohistochemical analysis of paraffin-embedded human Squamous cell carcinoma of lung. 1, Antibody was diluted at 1:200(4° overnight). 2, Tris-EDTA,pH9.0 was used for antigen retrieval. 3,Secondary antibody was diluted at 1:200(room temperature, 45min).

