



eRF3a rabbit pAb

Cat No.:ES5684

For research use only

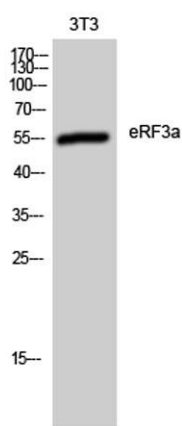
Overview

Product Name	eRF3a rabbit pAb
Host species	Rabbit
Applications	WB;IHC;IF;ELISA
Species Cross-Reactivity	Human;Mouse;Rat
Recommended dilutions	Western Blot: 1/500 - 1/2000. Immunohistochemistry: 1/100 - 1/300. ELISA: 1/40000. Not yet tested in other applications.
Immunogen	The antiserum was produced against synthesized peptide derived from human GSPT1. AA range:101-150
Specificity	eRF3a Polyclonal Antibody detects endogenous levels of eRF3a protein.
Formulation	Liquid in PBS containing 50% glycerol, 0.5% BSA and 0.02% sodium azide.
Storage	Store at -20°C. Avoid repeated freeze-thaw cycles.
Protein Name	Eukaryotic peptide chain release factor GTP-binding subunit ERF3A
Gene Name	GSPT1
Cellular localization	intracellular,cytosol,translation release factor complex,
Purification	The antibody was affinity-purified from rabbit antiserum by affinity-chromatography using epitope-specific immunogen.
Clonality	Polyclonal
Concentration	1 mg/ml
Observed band	55kD
Human Gene ID	2935
Human Swiss-Prot Number	P15170
Alternative Names	GSPT1; ERF3A; Eukaryotic peptide chain release factor GTP-binding subunit ERF3A; Eukaryotic peptide chain release factor subunit 3a; eRF3a; G1 to S phase transition protein 1 homolog function:Involved in translation termination in
Background	

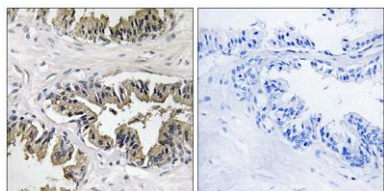




response to the termination codons UAA, UAG and UGA. Stimulates the activity of ERF1. Involved in regulation of mammalian cell growth.,similarity:Belongs to the GTP-binding elongation factor family. ERF3 subfamily.,subunit:Component of the mRNA surveillance SURF complex, at least composed of ERF1, ERF3 (ERF3A or ERF3B), EEF2, UPF1/RENT1, SMG1, SMG8 and SMG9.,



Western Blot analysis of 3T3 cells using eRF3a Polyclonal Antibody



Immunohistochemistry analysis of paraffin-embedded human prostate carcinoma tissue, using GSPT1 Antibody. The picture on the right is blocked with the synthesized peptide.

