

GRB2 rabbit pAb

Cat No.:ES5630

For research use only

Overview

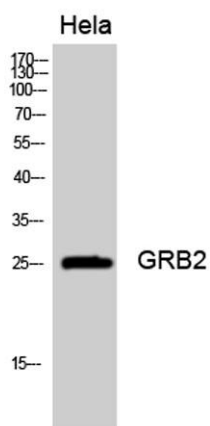
Product Name	GRB2 rabbit pAb
Host species	Rabbit
Applications	WB;ELISA
Species Cross-Reactivity	Human;Mouse;Rat
Recommended dilutions	Western Blot: 1/500 - 1/2000. ELISA: 1/40000. Not yet tested in other applications.
Immunogen	The antiserum was produced against synthesized peptide derived from human GRB2. AA range:141-190
Specificity	GRB2 Polyclonal Antibody detects endogenous levels of GRB2 protein.
Formulation	Liquid in PBS containing 50% glycerol, 0.5% BSA and 0.02% sodium azide.
Storage	Store at -20°C. Avoid repeated freeze-thaw cycles.
Protein Name	Growth factor receptor-bound protein 2
Gene Name	GRB2
Cellular localization	Nucleus . Cytoplasm . Endosome . Golgi apparatus .
Purification	The antibody was affinity-purified from rabbit antiserum by affinity-chromatography using epitope-specific immunogen.
Clonality	Polyclonal
Concentration	1 mg/ml
Observed band	32kD
Human Gene ID	2885
Human Swiss-Prot Number	P62993
Alternative Names	GRB2; ASH; Growth factor receptor-bound protein 2; Adapter protein GRB2; Protein Ash; SH2/SH3 adapter GRB2
Background	The protein encoded by this gene binds the epidermal growth factor receptor and contains one SH2 domain and two SH3 domains. Its two SH3 domains direct complex formation with proline-rich regions of other proteins, and its SH2 domain binds



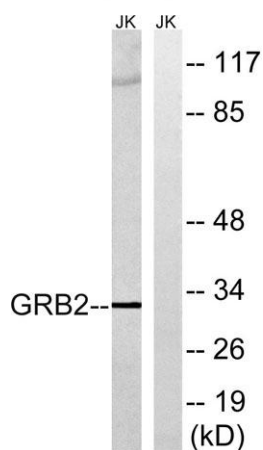


tyrosine phosphorylated sequences. This gene is similar to the Sem5 gene of *C.elegans*, which is involved in the signal transduction pathway. Two alternatively spliced transcript variants encoding different isoforms have been found for this gene. [provided by RefSeq, Jul 2008],

Western Blot analysis of HeLa cells using GRB2 Polyclonal Antibody diluted at 1:2000



Western blot analysis of lysates from Jurkat cells, using GRB2 Antibody. The lane on the right is blocked with the synthesized peptide.



Western blot analysis of the lysates from HeLa cells using GRB2 antibody.

