

# GPR37 rabbit pAb

Cat No.:ES5615

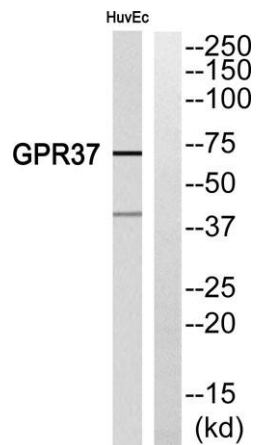
For research use only

## Overview

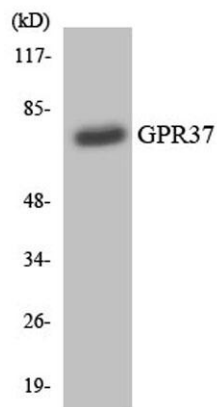
Product Name	GPR37 rabbit pAb
Host species	Rabbit
Applications	WB;ELISA
Species Cross-Reactivity	Human;Mouse;Rat
Recommended dilutions	Western Blot: 1/500 - 1/2000. ELISA: 1/10000. Not yet tested in other applications.
Immunogen	The antiserum was produced against synthesized peptide derived from human GPR37. AA range:211-260
Specificity	GPR37 Polyclonal Antibody detects endogenous levels of GPR37 protein.
Formulation	Liquid in PBS containing 50% glycerol, 0.5% BSA and 0.02% sodium azide.
Storage	Store at -20°C. Avoid repeated freeze-thaw cycles.
Protein Name	Probable G-protein coupled receptor 37
Gene Name	GPR37
Cellular localization	Cell membrane ; Multi-pass membrane protein . Endoplasmic reticulum membrane ; Multi-pass membrane protein .
Purification	The antibody was affinity-purified from rabbit antiserum by affinity-chromatography using epitope-specific immunogen.
Clonality	Polyclonal
Concentration	1 mg/ml
Observed band	68kD
Human Gene ID	2861
Human Swiss-Prot Number	O15354
Alternative Names	GPR37; Probable G-protein coupled receptor 37; Endothelin B receptor-like protein 1; ETBR-LP-1; Parkin-associated endothelin receptor-like receptor; PAELR
Background	This gene is a member of the G protein-coupled receptor family. The encoded protein contains seven



transmembrane domains and is found in cell and endoplasmic reticulum membranes. G protein-coupled receptors are involved in translating outside signals into G protein mediated intracellular effects. This gene product interacts with Parkin and is involved in juvenile Parkinson disease. [provided by RefSeq, Oct 2012],



Western blot analysis of GPR37 Antibody. The lane on the right is blocked with the GPR37 peptide.



Western blot analysis of the lysates from HT-29 cells using GPR37 antibody.

