

GPR20 rabbit pAb

Cat No.:ES5595

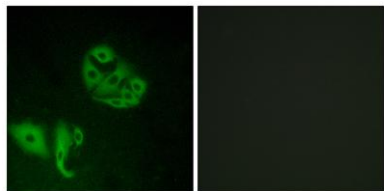
For research use only

Overview

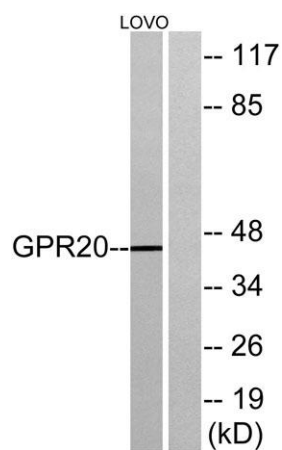
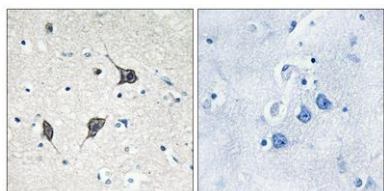
Product Name	GPR20 rabbit pAb
Host species	Rabbit
Applications	WB;IHC;IF;ELISA
Species Cross-Reactivity	Human;Rat;Mouse;
Recommended dilutions	Western Blot: 1/500 - 1/2000. Immunohistochemistry: 1/100 - 1/300. Immunofluorescence: 1/200 - 1/1000. ELISA: 1/5000. Not yet tested in other applications.
Immunogen	The antiserum was produced against synthesized peptide derived from human GPR20. AA range:291-340
Specificity	GPR20 Polyclonal Antibody detects endogenous levels of GPR20 protein.
Formulation	Liquid in PBS containing 50% glycerol, 0.5% BSA and 0.02% sodium azide.
Storage	Store at -20°C. Avoid repeated freeze-thaw cycles.
Protein Name	G-protein coupled receptor 20
Gene Name	GPR20
Cellular localization	Cell membrane ; Multi-pass membrane protein .
Purification	The antibody was affinity-purified from rabbit antiserum by affinity-chromatography using epitope-specific immunogen.
Clonality	Polyclonal
Concentration	1 mg/ml
Observed band	42kD
Human Gene ID	2843
Human Swiss-Prot Number	Q99678
Alternative Names	GPR20; G-protein coupled receptor 20
Background	function:Orphan receptor.,similarity:Belongs to the G-protein coupled receptor 1 family.,tissue specificity:Liver and the brain regions thalamus, putamen, and caudate, but not in frontal cortex, pons and hypothalamus.,



Immunofluorescence analysis of A549 cells, using GPR20 Antibody. The picture on the right is blocked with the synthesized peptide.



Immunohistochemistry analysis of paraffin-embedded human brain tissue, using GPR20 Antibody. The picture on the right is blocked with the synthesized peptide.



Western blot analysis of lysates from LOVO cells, using GPR20 Antibody. The lane on the right is blocked with the synthesized peptide.

