

STK32C rabbit pAb

Cat No.:ES5577

For research use only

Overview

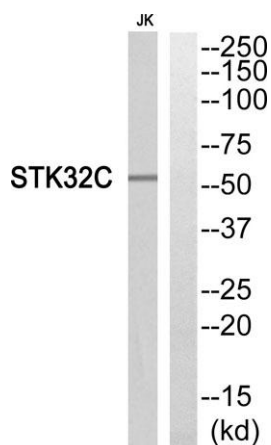
Product Name	STK32C rabbit pAb
Host species	Rabbit
Applications	WB;IHC;IF;ELISA
Species Cross-Reactivity	Human;Mouse
Recommended dilutions	Western Blot: 1/500 - 1/2000. Immunohistochemistry: 1/100 - 1/300. ELISA: 1/5000. Not yet tested in other applications.
Immunogen	The antiserum was produced against synthesized peptide derived from human STK32C. AA range:340-389
Specificity	STK32C Polyclonal Antibody detects endogenous levels of STK32C protein.
Formulation	Liquid in PBS containing 50% glycerol, 0.5% BSA and 0.02% sodium azide.
Storage	Store at -20°C. Avoid repeated freeze-thaw cycles.
Protein Name	Serine/threonine-protein kinase 32C
Gene Name	STK32C
Cellular localization	intracellular,
Purification	The antibody was affinity-purified from rabbit antiserum by affinity-chromatography using epitope-specific immunogen.
Clonality	Polyclonal
Concentration	1 mg/ml
Observed band	
Human Gene ID	282974
Human Swiss-Prot Number	Q86UX6
Alternative Names	STK32C; Serine/threonine-protein kinase 32C; PKE; YANK3
Background	The protein encoded by this gene is a member of the serine/threonine protein kinase family. It is thought that this family member is functional in brain due to its high expression levels there. DNA methylation differences have been found in this



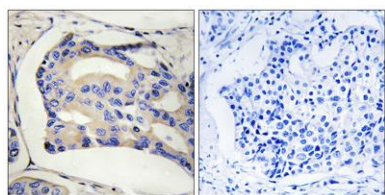


ELK Biotechnology

gene in monozygotic twins that are discordant for adolescent depression. Alternative splicing results in multiple transcript variants. [provided by RefSeq, Jan 2016],



Western blot analysis of STK32C Antibody. The lane on the right is blocked with the STK32C peptide.



Immunohistochemistry analysis of paraffin-embedded human breast cancer, using STK32C Antibody. The picture on the right is blocked with the STK32C peptide.



+86-27-59760950

ELKbio@ELKbiotech.com

www.elkbiotech.com

23-2, No.388 Gaoxin 2nd Road, Wuhan East Lake Hi-tech Development Zone, Hubei, P.R.C.