

Arfaptin 1 rabbit pAb

Cat No.:ES5546

For research use only

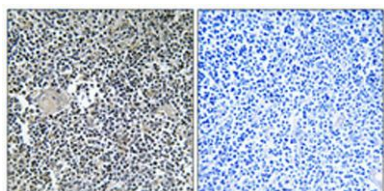
Overview

Product Name	Arfaptin 1 rabbit pAb
Host species	Rabbit
Applications	WB;IHC;IF;ELISA
Species Cross-Reactivity	Human;Mouse;Rat
Recommended dilutions	Western Blot: 1/500 - 1/2000. Immunohistochemistry: 1/100 - 1/300. Immunofluorescence: 1/200 - 1/1000. ELISA: 1/40000. Not yet tested in other applications.
Immunogen	The antiserum was produced against synthesized peptide derived from human ARFIP1. AA range:271-320
Specificity	Arfaptin 1 Polyclonal Antibody detects endogenous levels of Arfaptin 1 protein.
Formulation	Liquid in PBS containing 50% glycerol, 0.5% BSA and 0.02% sodium azide.
Storage	Store at -20°C. Avoid repeated freeze-thaw cycles.
Protein Name	Arfaptin-1
Gene Name	ARFIP1
Cellular localization	Golgi apparatus . Golgi apparatus, trans-Golgi network membrane .
Purification	The antibody was affinity-purified from rabbit antiserum by affinity-chromatography using epitope-specific immunogen.
Clonality	Polyclonal
Concentration	1 mg/ml
Observed band	40kD
Human Gene ID	27236
Human Swiss-Prot Number	P53367
Alternative Names	ARFIP1; Arfaptin-1; ADP-ribosylation factor-interacting protein 1
Background	function:Putative target protein of ADP-ribosylation factor.,similarity:Contains 1 AH domain.,subunit:Interacts with non-myristoylated

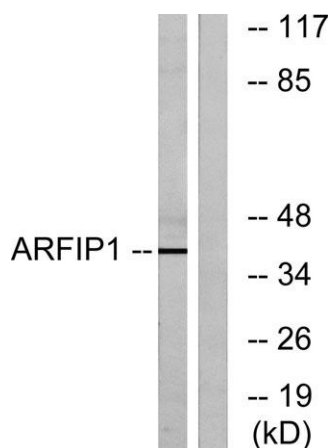
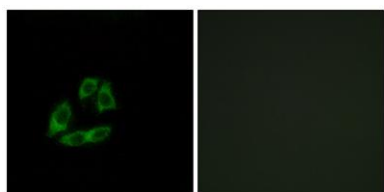


GTP-bound ARF3, but not to GDP-bound ARF3, and also to ARF1. Binds with lower affinity to ARF5 and with very little affinity to ARF6.,tissue specificity:Ubiquitously expressed. Higher levels in liver, pancreas, placenta, skeletal muscle and heart.,

Immunohistochemical analysis of paraffin-embedded Human thymus gland. Antibody was diluted at 1:100(4° overnight). High-pressure and temperature Tris-EDTA,pH8.0 was used for antigen retrieval. Negative contrl (right) obtained from antibody was pre-absorb



Immunofluorescence analysis of A549 cells, using ARFIP1 Antibody. The picture on the right is blocked with the synthesized peptide.



Western blot analysis of lysates from Jurkat cells, using ARFIP1 Antibody. The lane on the right is blocked with the synthesized peptide.

