



Connexin 46 rabbit pAb

Cat No.:ES5527

For research use only

Overview

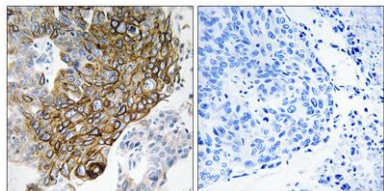
Product Name	Connexin 46 rabbit pAb
Host species	Rabbit
Applications	IHC;IF;ELISA
Species Cross-Reactivity	Human;Mouse;Rat
Recommended dilutions	IHC-p 1:100-500;IF/ICC 1:100-500;ELISA 1:5000-20000
Immunogen	The antiserum was produced against synthesized peptide derived from human GJA3. AA range:151-200
Specificity	Connexin 46 Polyclonal Antibody detects endogenous levels of Connexin 46 protein.
Formulation	Liquid in PBS containing 50% glycerol, 0.5% BSA and 0.02% sodium azide.
Storage	Store at -20°C. Avoid repeated freeze-thaw cycles.
Protein Name	Gap junction alpha-3 protein
Gene Name	GJA3
Cellular localization	Cell membrane ; Multi-pass membrane protein . Cell junction, gap junction .
Purification	The antibody was affinity-purified from rabbit antiserum by affinity-chromatography using epitope-specific immunogen.
Clonality	Polyclonal
Concentration	1 mg/ml
Observed band	
Human Gene ID	2700
Human Swiss-Prot Number	Q9Y6H8
Alternative Names	GJA3; Gap junction alpha-3 protein; Connexin-46; Cx46
Background	The protein encoded by this gene is a connexin and is a component of lens fiber gap junctions. Defects in this gene are a cause of zonular pulverulent cataract type 3 (CZP3). [provided by RefSeq, Jan 2010],





ELK Biotechnology

Immunohistochemistry analysis of paraffin-embedded human lung carcinoma tissue, using GJA3 Antibody. The picture on the right is blocked with the synthesized peptide.



+86-27-59760950

ELKbio@ELKbiotech.com

www.elkbiotech.com

23-2, No.388 Gaoxin 2nd Road, Wuhan East Lake Hi-tech Development Zone, Hubei, P.R.C