

SERGEF rabbit pAb

Cat No.:ES5490

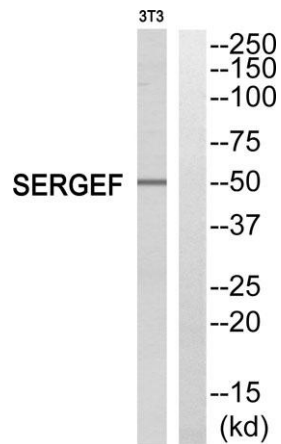
For research use only

Overview

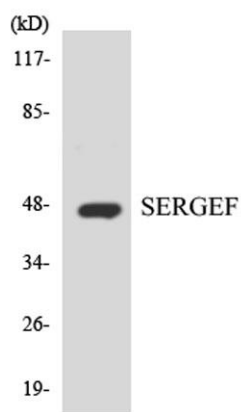
Product Name	SERGEF rabbit pAb
Host species	Rabbit
Applications	WB;ELISA;IHC
Species Cross-Reactivity	Human;Rat;Mouse;
Recommended dilutions	WB 1:500-2000;IHC-p 1:50-300; ELISA 2000-20000
Immunogen	The antiserum was produced against synthesized peptide derived from human SERGEF. AA range:179-228
Specificity	SERGEF Polyclonal Antibody detects endogenous levels of SERGEF protein.
Formulation	Liquid in PBS containing 50% glycerol, 0.5% BSA and 0.02% sodium azide.
Storage	Store at -20°C. Avoid repeated freeze-thaw cycles.
Protein Name	Secretion-regulating guanine nucleotide exchange factor
Gene Name	SERGEF
Cellular localization	Cytoplasm . Nucleus .
Purification	The antibody was affinity-purified from rabbit antiserum by affinity-chromatography using epitope-specific immunogen.
Clonality	Polyclonal
Concentration	1 mg/ml
Observed band	50kD
Human Gene ID	26297
Human Swiss-Prot Number	Q9UGK8
Alternative Names	SERGEF; DELGEF; GNEFR; Secretion-regulating guanine nucleotide exchange factor; Deafness locus-associated putative guanine nucleotide exchange factor; DelGEF; Guanine nucleotide exchange factor-related protein
Background	function:Probable guanine nucleotide exchange factor (GEF), which may be involved in the secretion process.,PTM:Phosphorylated upon DNA damage,



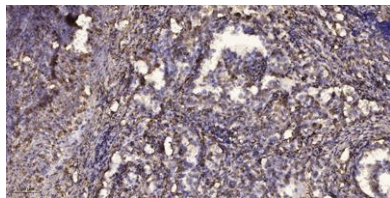
probably by ATM or ATR.,similarity:Contains 7 RCC1 repeats.,subunit:Interacts with SEC5. The interaction occurs only in the presence of magnesium or manganese and is stimulated by dCTP or GTP,



Western blot analysis of SERGEF Antibody. The lane on the right is blocked with the SERGEF peptide.



Western blot analysis of the lysates from HT-29 cells using SERGEF antibody.



Immunohistochemical analysis of paraffin-embedded human Squamous cell carcinoma of lung. 1, Antibody was diluted at 1:200(4° overnight). 2, Tris-EDTA,pH9.0 was used for antigen retrieval. 3,Secondary antibody was diluted at 1:200(room temperature, 45min).

