

GABAA Ry1 rabbit pAb

Cat No.:ES5434

For research use only

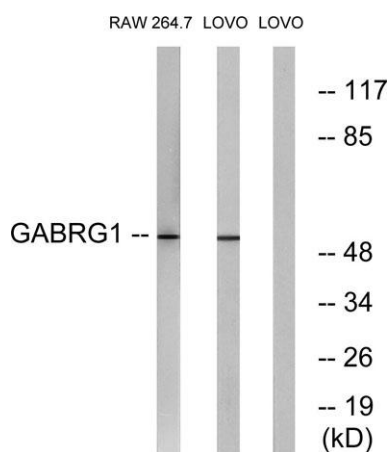
Overview

Product Name	GABAA Ry1 rabbit pAb
Host species	Rabbit
Applications	WB;IHC;IF;ELISA
Species Cross-Reactivity	Human;Mouse;Rat
Recommended dilutions	Western Blot: 1/500 - 1/2000. Immunohistochemistry: 1/100 - 1/300. ELISA: 1/20000. Not yet tested in other applications.
Immunogen	The antiserum was produced against synthesized peptide derived from human GABRG1. AA range:11-60
Specificity	GABAA Ry1 Polyclonal Antibody detects endogenous levels of GABAA Ry1 protein.
Formulation	Liquid in PBS containing 50% glycerol, 0.5% BSA and 0.02% sodium azide.
Storage	Store at -20°C. Avoid repeated freeze-thaw cycles.
Protein Name	Gamma-aminobutyric acid receptor subunit gamma-1
Gene Name	GABRG1
Cellular localization	Cell junction, synapse, postsynaptic cell membrane; Multi-pass membrane protein. Cell membrane; Multi-pass membrane protein.
Purification	The antibody was affinity-purified from rabbit antiserum by affinity-chromatography using epitope-specific immunogen.
Clonality	Polyclonal
Concentration	1 mg/ml
Observed band	54kD
Human Gene ID	2565
Human Swiss-Prot Number	Q8N1C3
Alternative Names	GABRG1; Gamma-aminobutyric acid receptor subunit gamma-1; GABA(A) receptor subunit gamma-1
Background	The protein encoded by this gene belongs to the

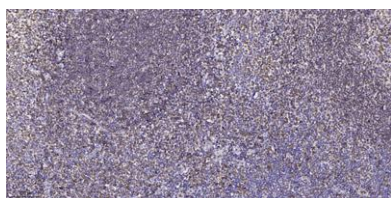




ligand-gated ionic channel family. It is an integral membrane protein and plays an important role in inhibiting neurotransmission by binding to the benzodiazepine receptor and opening an integral chloride channel. This gene is clustered with three other family members on chromosome 4. [provided by RefSeq, Jul 2008],



Western blot analysis of lysates from LOVO and RAW264.7 cells, using GABRG1 Antibody. The lane on the right is blocked with the synthesized peptide.



Immunohistochemical analysis of paraffin-embedded human tonsil. 1, Antibody was diluted at 1:200(4° overnight). 2, Tris-EDTA,pH9.0 was used for antigen retrieval. 3,Secondary antibody was diluted at 1:200(room temperature, 45min).

