



Fyn (phospho Tyr530) rabbit pAb

Cat No.:ES5415

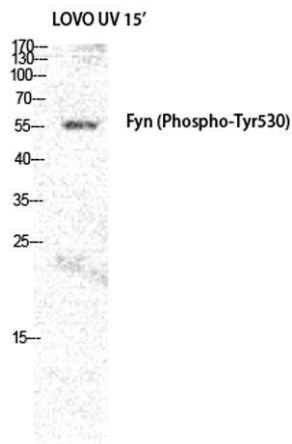
For research use only

Overview

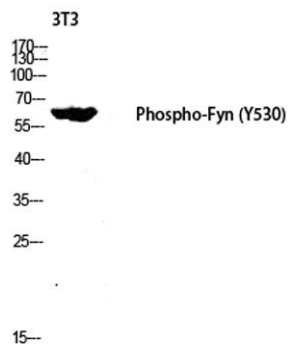
Product Name	Fyn (phospho Tyr530) rabbit pAb
Host species	Rabbit
Applications	WB;IHC;IF;ELISA
Species Cross-Reactivity	Human;Mouse;Rat
Recommended dilutions	Western Blot: 1/500 - 1/2000. Immunohistochemistry: 1/100 - 1/300. ELISA: 1/5000. Not yet tested in other applications.
Immunogen	The antiserum was produced against synthesized peptide derived from human Fyn around the phosphorylation site of Tyr530. AA range:488-537
Specificity	Phospho-Fyn (Y530) Polyclonal Antibody detects endogenous levels of Fyn protein only when phosphorylated at Y530.
Formulation	Liquid in PBS containing 50% glycerol, 0.5% BSA and 0.02% sodium azide.
Storage	Store at -20°C. Avoid repeated freeze-thaw cycles.
Protein Name	Tyrosine-protein kinase Fyn
Gene Name	FYN
Cellular localization	Cytoplasm. Nucleus. Cell membrane. Present and active in lipid rafts. Palmitoylation is crucial for proper trafficking.
Purification	The antibody was affinity-purified from rabbit antiserum by affinity-chromatography using epitope-specific immunogen.
Clonality	Polyclonal
Concentration	1 mg/ml
Observed band	60kD
Human Gene ID	2534
Human Swiss-Prot Number	P06241
Alternative Names	FYN; Tyrosine-protein kinase Fyn; Proto-oncogene Syn; Proto-oncogene c-Fyn; Src-like kinase; SLK; p59-Fyn
Background	This gene is a member of the protein-tyrosine kinase



oncogene family. It encodes a membrane-associated tyrosine kinase that has been implicated in the control of cell growth. The protein associates with the p85 subunit of phosphatidylinositol 3-kinase and interacts with the fyn-binding protein. Alternatively spliced transcript variants encoding distinct isoforms exist. [provided by RefSeq, Jul 2008],

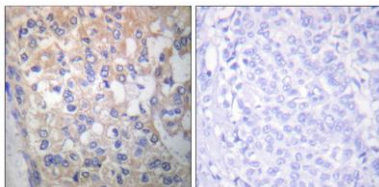


Western Blot analysis of LOVO+UV cells using Phospho-Fyn (Y530) Polyclonal Antibody diluted at 1:2000



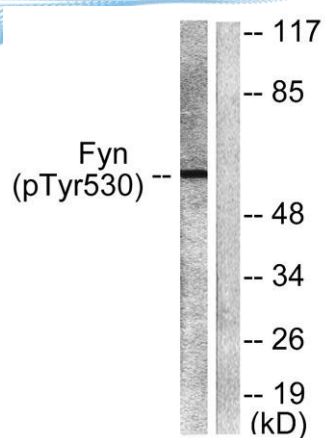
Western blot analysis of 3T3 lysis using Phospho-Fyn (Y530) antibody. Antibody was diluted at 1:2000

Immunohistochemistry analysis of paraffin-embedded human breast carcinoma, using Fyn (Phospho-Tyr530) Antibody. The picture on the right is blocked with the phospho peptide.





ELK Biotechnology



Western blot analysis of lysates from 293 cells treated with H₂O₂ 100uM 15', using Fyn (Phospho-Tyr530) Antibody. The lane on the right is blocked with the phospho peptide.



+86-27-59760950

ELKbio@ELKbiotech.com

www.elkbiotech.com

23-2, No.388 Gaoxin 2nd Road,Wuhan East Lake Hi-tech Development Zone, Hubei , P.R.C