

Latrophilin-1 rabbit pAb

Cat No.:ES5265

For research use only

Overview

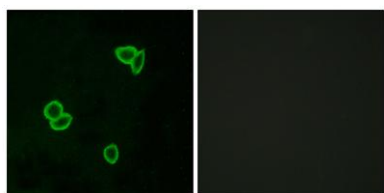
Product Name	Latrophilin-1 rabbit pAb
Host species	Rabbit
Applications	WB;ELISA;IHC
Species Cross-Reactivity	Human;Mouse;Rat
Recommended dilutions	WB 1:500-2000;IHC-p 1:50-300; ELISA 2000-20000
Immunogen	The antiserum was produced against synthesized peptide derived from human LPHN1. AA range:561-610
Specificity	Latrophilin-1 Polyclonal Antibody detects endogenous levels of Latrophilin-1 protein.
Formulation	Liquid in PBS containing 50% glycerol, 0.5% BSA and 0.02% sodium azide.
Storage	Store at -20°C. Avoid repeated freeze-thaw cycles.
Protein Name	Latrophilin-1
Gene Name	LPHN1
Cellular localization	Cell membrane; Multi-pass membrane protein. Cell projection, axon . Cell projection, growth cone . Cell junction, synapse . Cell junction, synapse, presynaptic cell membrane . Cell junction, synapse, synaptosome . Colocalizes with TENM2 on the cell surfac
Purification	The antibody was affinity-purified from rabbit antiserum by affinity-chromatography using epitope-specific immunogen.
Clonality	Polyclonal
Concentration	1 mg/ml
Observed band	
Human Gene ID	22859
Human Swiss-Prot Number	O94910
Alternative Names	LPHN1; KIAA0821; LEC2; Latrophilin-1; Calcium-independent alpha-latrotoxin receptor 1; CIRL-1; Lectomedin-2
Background	This gene encodes a member of the latrophilin





subfamily of G-protein coupled receptors (GPCR). Latrophilins may function in both cell adhesion and signal transduction. In experiments with non-human species, endogenous proteolytic cleavage within a cysteine-rich GPS (G-protein-coupled-receptor proteolysis site) domain resulted in two subunits (a large extracellular N-terminal cell adhesion subunit and a subunit with substantial similarity to the secretin/calcitonin family of GPCRs) being non-covalently bound at the cell membrane. Latrophilin-1 has been shown to recruit the neurotoxin from black widow spider venom, alpha-latrotoxin, to the synapse plasma membrane. Alternative splicing results in multiple variants encoding distinct isoforms.[provided by RefSeq, Oct 2008],

Immunofluorescence analysis of LOVO cells, using LPHN1 Antibody. The picture on the right is blocked with the synthesized peptide.



Immunohistochemical analysis of paraffin-embedded human meningioma. 1, Antibody was diluted at 1:200(4° overnight). 2, Tris-EDTA,pH9.0 was used for antigen retrieval. 3,Secondary antibody was diluted at 1:200(room temperature, 45min).

