

Ah Receptor (phospho Ser36) rabbit pAb

Cat No.:ES5068

For research use only

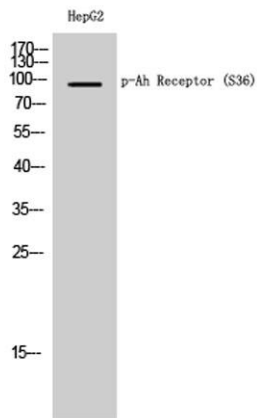
Overview

Product Name	Ah Receptor (phospho Ser36) rabbit pAb
Host species	Rabbit
Applications	WB;IHC;IF;ELISA
Species Cross-Reactivity	Human;Mouse;Rat
Recommended dilutions	Western Blot: 1/500 - 1/2000. Immunohistochemistry: 1/100 - 1/300. ELISA: 1/5000. Not yet tested in other applications.
Immunogen	The antiserum was produced against synthesized peptide derived from human AhR around the phosphorylation site of Ser36. AA range:2-51
Specificity	Phospho-Ah Receptor (S36) Polyclonal Antibody detects endogenous levels of Ah Receptor protein only when phosphorylated at S36.
Formulation	Liquid in PBS containing 50% glycerol, 0.5% BSA and 0.02% sodium azide.
Storage	Store at -20°C. Avoid repeated freeze-thaw cycles.
Protein Name	Aryl hydrocarbon receptor
Gene Name	AHR
Cellular localization	Cytoplasm . Nucleus . Initially cytoplasmic; upon binding with ligand and interaction with a HSP90, it translocates to the nucleus. .
Purification	The antibody was affinity-purified from rabbit antiserum by affinity-chromatography using epitope-specific immunogen.
Clonality	Polyclonal
Concentration	1 mg/ml
Observed band	90kD
Human Gene ID	196/57491
Human Swiss-Prot Number	P35869/A9YTQ3
Alternative Names	AHR; BHLHE76; Aryl hydrocarbon receptor; Ah receptor; AhR; Class E basic helix-loop-helix protein 76; bHLHe76; AHRR; BHLHE77; KIAA1234; Aryl hydrocarbon receptor repressor; AhR repressor;

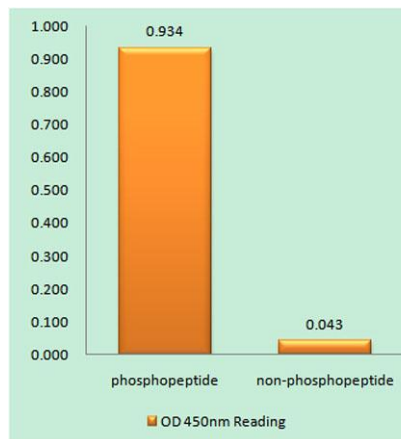


Background

AhRR; Class E basic helix-loop-helix protein 77; bHL
The protein encoded by this gene is a ligand-activated helix-loop-helix transcription factor involved in the regulation of biological responses to planar aromatic hydrocarbons. This receptor has been shown to regulate xenobiotic-metabolizing enzymes such as cytochrome P450. Before ligand binding, the encoded protein is sequestered in the cytoplasm; upon ligand binding, this protein moves to the nucleus and stimulates transcription of target genes. [provided by RefSeq, Sep 2015],



Western Blot analysis of HepG2 cells using Phospho-Ah Receptor (S36) Polyclonal Antibody

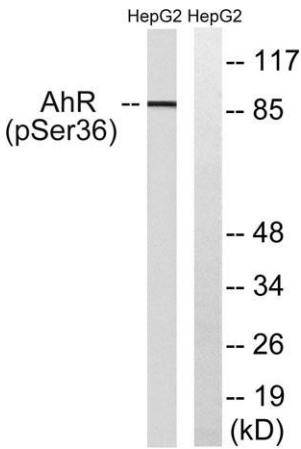
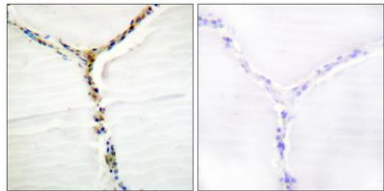


Enzyme-Linked Immunosorbent Assay (Phospho-ELISA) for Immunogen Phosphopeptide (Phospho-left) and Non-Phosphopeptide (Phospho-right), using AhR (Phospho-Ser36) Antibody





Immunohistochemistry analysis of paraffin-embedded human thyroid gland, using AhR (Phospho-Ser36) Antibody. The picture on the right is blocked with the phospho peptide.



Western blot analysis of lysates from HepG2 cells, using AhR (Phospho-Ser36) Antibody. The lane on the right is blocked with the phospho peptide.

