

EF-2 (phospho Thr56) rabbit pAb

Cat No.:ES5044

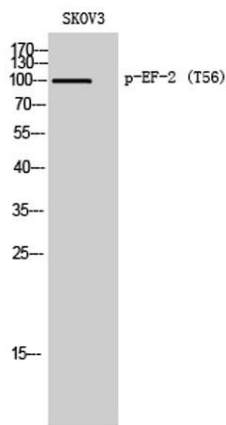
For research use only

Overview

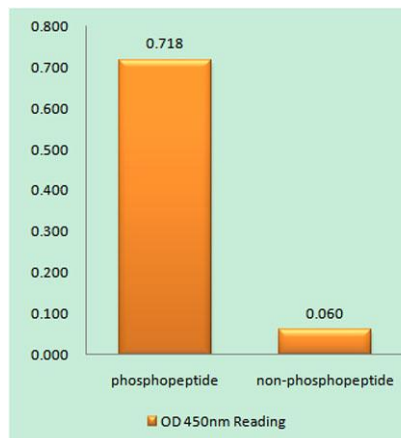
Product Name	EF-2 (phospho Thr56) rabbit pAb
Host species	Rabbit
Applications	WB;IHC;IF;ELISA
Species Cross-Reactivity	Human;Mouse;Rat
Recommended dilutions	Western Blot: 1/500 - 1/2000. Immunohistochemistry: 1/100 - 1/300. Immunofluorescence: 1/200 - 1/1000. ELISA: 1/10000. Not yet tested in other applications.
Immunogen	The antiserum was produced against synthesized peptide derived from human eEF2 around the phosphorylation site of Thr56. AA range:31-80
Specificity	Phospho-EF-2 (T56) Polyclonal Antibody detects endogenous levels of EF-2 protein only when phosphorylated at T56.
Formulation	Liquid in PBS containing 50% glycerol, 0.5% BSA and 0.02% sodium azide.
Storage	Store at -20°C. Avoid repeated freeze-thaw cycles.
Protein Name	Elongation factor 2
Gene Name	EEF2
Cellular localization	Cytoplasm . Nucleus . Phosphorylation by CSK promotes cleavage and SUMOylation-dependent nuclear translocation of the C-terminal cleavage product. .
Purification	The antibody was affinity-purified from rabbit antiserum by affinity-chromatography using epitope-specific immunogen.
Clonality	Polyclonal
Concentration	1 mg/ml
Observed band	100kD
Human Gene ID	1938
Human Swiss-Prot Number	P13639
Alternative Names	EEF2; EF2; Elongation factor 2; EF-2
Background	This gene encodes a member of the GTP-binding



translation elongation factor family. This protein is an essential factor for protein synthesis. It promotes the GTP-dependent translocation of the nascent protein chain from the A-site to the P-site of the ribosome. This protein is completely inactivated by EF-2 kinase phosphorylation. [provided by RefSeq, Jul 2008],

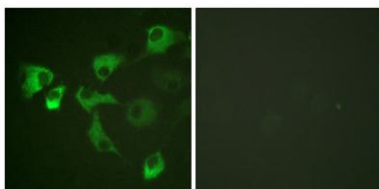


Western Blot analysis of SKOV3 cells using Phospho-EF-2 (T56) Polyclonal Antibody diluted at 1:2000



Enzyme-Linked Immunosorbent Assay (Phospho-ELISA) for Immunogen Phosphopeptide (Phospho-left) and Non-Phosphopeptide (Phospho-right), using eEF2 (Phospho-Thr56) Antibody

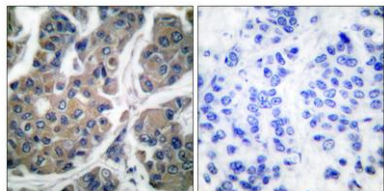
Immunofluorescence analysis of HUVEC cells, using eEF2 (Phospho-Thr56) Antibody. The picture on the right is blocked with the phospho peptide.





ELK Biotechnology

Immunohistochemistry analysis of paraffin-embedded human breast carcinoma, using eEF2 (Phospho-Thr56) Antibody. The picture on the right is blocked with the phospho peptide.



+86-27-59760950

ELKbio@ELKbiotech.com

www.elkbiotech.com

23-2, No.388 Gaoxin 2nd Road, Wuhan East Lake Hi-tech Development Zone, Hubei, P.R.C.