



Dsg2 rabbit pAb

Cat No.:ES5028

For research use only

Overview

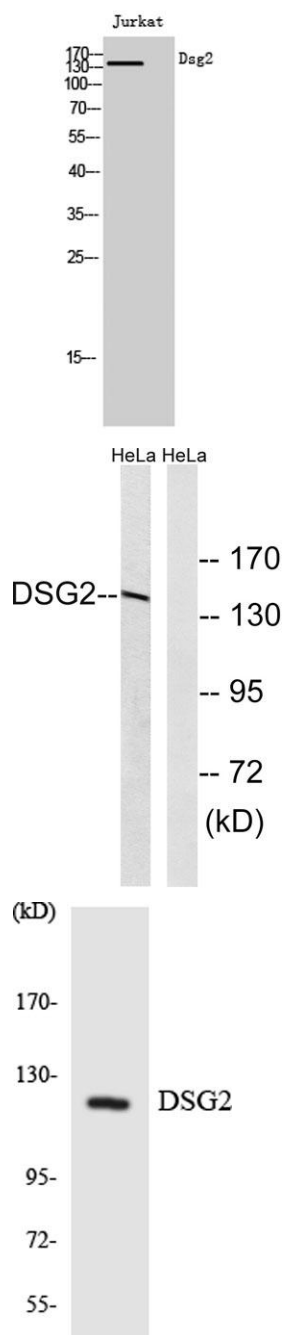
Product Name	Dsg2 rabbit pAb
Host species	Rabbit
Applications	WB;ELISA
Species Cross-Reactivity	Human;Rat;Mouse;
Recommended dilutions	Western Blot: 1/500 - 1/2000. ELISA: 1/40000. Not yet tested in other applications.
Immunogen	The antiserum was produced against synthesized peptide derived from human DSG2. AA range:401-450
Specificity	Dsg2 Polyclonal Antibody detects endogenous levels of Dsg2 protein.
Formulation	Liquid in PBS containing 50% glycerol, 0.5% BSA and 0.02% sodium azide.
Storage	Store at -20°C. Avoid repeated freeze-thaw cycles.
Protein Name	Desmoglein-2
Gene Name	DSG2
Cellular localization	Cell membrane ; Single-pass type I membrane protein. Cell junction, desmosome.
Purification	The antibody was affinity-purified from rabbit antiserum by affinity-chromatography using epitope-specific immunogen.
Clonality	Polyclonal
Concentration	1 mg/ml
Observed band	140kD
Human Gene ID	1829
Human Swiss-Prot Number	Q14126
Alternative Names	DSG2; CDHF5; Desmoglein-2; Cadherin family member 5; HDGC
Background	This gene encodes a member of the desmoglein family and cadherin cell adhesion molecule superfamily of proteins. Desmogleins are calcium-binding transmembrane glycoprotein components of desmosomes, cell-cell junctions





between epithelial, myocardial, and other cell types. The encoded preproprotein is proteolytically processed to generate the mature glycoprotein. This gene is present in a gene cluster with other desmoglein gene family members on chromosome 18. Mutations in this gene have been associated with arrhythmogenic right ventricular dysplasia, familial, 10. [provided by RefSeq, Jan 2016],

Western Blot analysis of Jurkat cells using Dsg2 Polyclonal Antibody



Western blot analysis of lysates from HeLa cells, using DSG2 Antibody. The lane on the right is blocked with the synthesized peptide.

Western blot analysis of the lysates from HUVECells using DSG2 antibody.

