



POLR3H rabbit pAb

Cat No.:ES5004

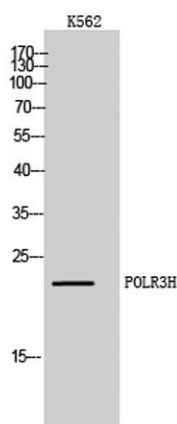
For research use only

Overview

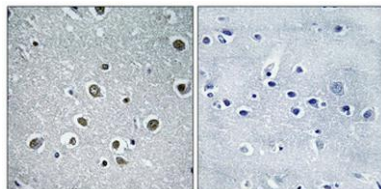
Product Name	POLR3H rabbit pAb
Host species	Rabbit
Applications	WB;IHC;IF;ELISA
Species Cross-Reactivity	Human;Mouse;Rat
Recommended dilutions	Western Blot: 1/500 - 1/2000. Immunohistochemistry: 1/100 - 1/300. ELISA: 1/40000. Not yet tested in other applications.
Immunogen	The antiserum was produced against synthesized peptide derived from human RPC8. AA range:151-200
Specificity	POLR3H Polyclonal Antibody detects endogenous levels of POLR3H protein.
Formulation	Liquid in PBS containing 50% glycerol, 0.5% BSA and 0.02% sodium azide.
Storage	Store at -20°C. Avoid repeated freeze-thaw cycles.
Protein Name	DNA-directed RNA polymerase III subunit RPC8
Gene Name	POLR3H
Cellular localization	Nucleus.
Purification	The antibody was affinity-purified from rabbit antiserum by affinity-chromatography using epitope-specific immunogen.
Clonality	Polyclonal
Concentration	1 mg/ml
Observed band	23kD
Human Gene ID	171568
Human Swiss-Prot Number	Q9Y535
Alternative Names	POLR3H; KIAA1665; RPC8; DNA-directed RNA polymerase III subunit RPC8; RNA polymerase III subunit C8; DNA-directed RNA polymerase III subunit H; RNA polymerase III subunit 22.9 kDa subunit; RPC22.9
Background	function:DNA-dependent RNA polymerase catalyzes the transcription of DNA into RNA using the four



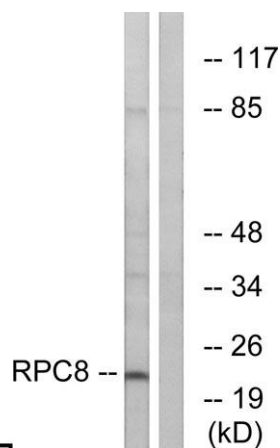
ribonucleoside triphosphates as substrates. Specific peripheral component of RNA polymerase III which synthesizes small RNAs, such as 5S rRNA and tRNAs.,similarity:Belongs to the eukaryotic RPB7/RPC8 RNA polymerase subunit family.,subunit:Component of the RNA polymerase III (Pol III) complex consisting of 17 subunits (By similarity). Interacts with CRCP/RPC9. POLR3H/RPC8 and CRCP/RPC9 probably form a Pol III subcomplex.,



Western Blot analysis of K562 cells using POLR3H Polyclonal Antibody diluted at 1:1000 cells nucleus extracted by Minute TM Cytoplasmic and Nuclear Fractionation kit (SC-003, Inventbiotech, MN, USA).



Immunohistochemical analysis of paraffin-embedded Human brain. Antibody was diluted at 1:100(4° overnight). High-pressure and temperature Tris-EDTA,pH8.0 was used for antigen retrieval. Negative contrl (right) obtained from antibody was pre-absorbed by i



Western blot analysis of lysates from K562 cells, using RPC8 Antibody. The lane on the right is blocked with the synthesized peptide.





ELK Biotechnology



+86-27-59760950

ELKbio@ELKbiotech.com

www.elkbiotech.com

23-2, No.388 Gaoxin 2nd Road,Wuhan East Lake Hi-tech Development Zone, Hubei , P.R.C