



DGK- β rabbit pAb

Cat No.:ES4958

For research use only

Overview

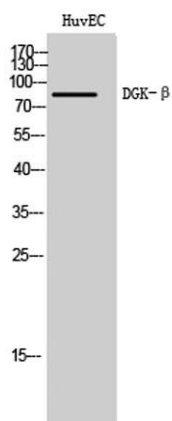
Product Name	DGK- β rabbit pAb
Host species	Rabbit
Applications	WB;ELISA
Species Cross-Reactivity	Human;Mouse;Rat
Recommended dilutions	Western Blot: 1/500 - 1/2000. ELISA: 1/40000. Not yet tested in other applications.
Immunogen	The antiserum was produced against synthesized peptide derived from human DGKB. AA range:657-706
Specificity	DGK- β Polyclonal Antibody detects endogenous levels of DGK- β protein.
Formulation	Liquid in PBS containing 50% glycerol, 0.5% BSA and 0.02% sodium azide.
Storage	Store at -20°C. Avoid repeated freeze-thaw cycles.
Protein Name	Diacylglycerol kinase beta
Gene Name	DGKB
Cellular localization	Cell junction, synapse, postsynaptic cell membrane ; Peripheral membrane protein . Cell membrane ; Peripheral membrane protein . Cytoplasm . Translocation to the plasma membrane is induced by phorbol esters. .; [Isoform 2]: Cytoplasm .
Purification	The antibody was affinity-purified from rabbit antiserum by affinity-chromatography using epitope-specific immunogen.
Clonality	Polyclonal
Concentration	1 mg/ml
Observed band	90kD
Human Gene ID	1607
Human Swiss-Prot Number	Q9Y6T7
Alternative Names	DGKB; DAGK2; KIAA0718; Diacylglycerol kinase beta; DAG kinase beta; 90 kDa diacylglycerol kinase; Diglyceride kinase beta; DGK-beta
Background	Diacylglycerol kinases (DGKs) are regulators of the





intracellular concentration of the second messenger diacylglycerol (DAG) and thus play a key role in cellular processes. Nine mammalian isotypes have been identified, which are encoded by separate genes. Mammalian DGK isozymes contain a conserved catalytic (kinase) domain and a cysteine-rich domain (CRD). The protein encoded by this gene is a diacylglycerol kinase, beta isotype. Two alternatively spliced transcript variants have been found for this gene. [provided by RefSeq, Jul 2008],

Western Blot analysis of HuvEC cells using DGK- β
Polyclonal Antibody



Western blot analysis of the lysates from HUVECcells
using DGKB antibody.

