



NSE2 rabbit pAb

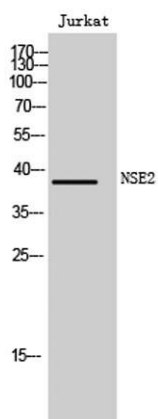
Cat No.:ES4944

For research use only

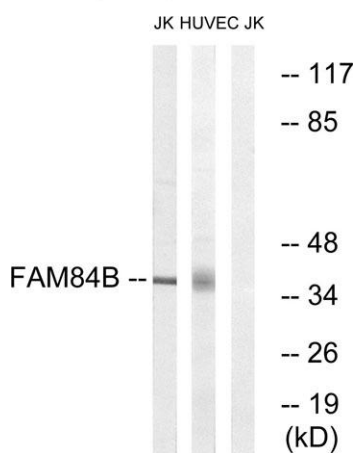
Overview

Product Name	NSE2 rabbit pAb
Host species	Rabbit
Applications	WB;IHC;IF;ELISA
Species Cross-Reactivity	Human;Rat;Mouse;
Recommended dilutions	Western Blot: 1/500 - 1/2000. Immunohistochemistry: 1/100 - 1/300. ELISA: 1/10000. Not yet tested in other applications.
Immunogen	The antiserum was produced against synthesized peptide derived from human FAM84B. AA range:11-60
Specificity	NSE2 Polyclonal Antibody detects endogenous levels of NSE2 protein.
Formulation	Liquid in PBS containing 50% glycerol, 0.5% BSA and 0.02% sodium azide.
Storage	Store at -20°C. Avoid repeated freeze-thaw cycles.
Protein Name	Protein FAM84B
Gene Name	FAM84B
Cellular localization	cytoplasm,plasma membrane,
Purification	The antibody was affinity-purified from rabbit antiserum by affinity-chromatography using epitope-specific immunogen.
Clonality	Polyclonal
Concentration	1 mg/ml
Observed band	38kD
Human Gene ID	157638
Human Swiss-Prot Number	Q96KN1
Alternative Names	FAM84B; BCMP101; NSE2; Protein FAM84B; Breast cancer membrane protein 101; Protein NSE2
Background	similarity:Belongs to the FAM84 family.,tissue specificity:Expressed in esophageal squamous cell carcinomas.,

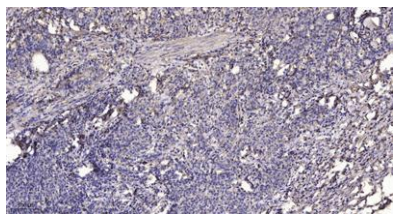




Western Blot analysis of Jurkat cells using NSE2 Polyclonal Antibody



Western blot analysis of lysates from Jurkat and HUVEC cells, using FAM84B Antibody. The lane on the right is blocked with the synthesized peptide.



Immunohistochemical analysis of paraffin-embedded human Gastric adenocarcinoma. 1, Antibody was diluted at 1:200(4° overnight). 2, Tris-EDTA,pH9.0 was used for antigen retrieval. 3,Secondary antibody was diluted at 1:200(room temperature, 45min).

