

Arylsulfatase K rabbit pAb

Cat No.:ES4916

For research use only

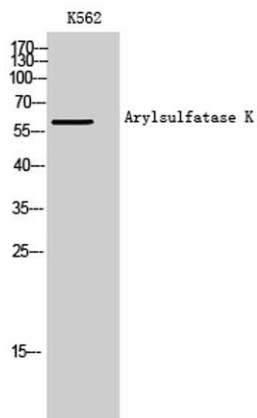
Overview

Product Name	Arylsulfatase K rabbit pAb
Host species	Rabbit
Applications	WB;IHC;IF;ELISA
Species Cross-Reactivity	Human;Mouse;Rat
Recommended dilutions	Western Blot: 1/500 - 1/2000. Immunohistochemistry: 1/100 - 1/300. ELISA: 1/20000. Not yet tested in other applications.
Immunogen	The antiserum was produced against synthesized peptide derived from human ARSK. AA range:481-530
Specificity	Arylsulfatase K Polyclonal Antibody detects endogenous levels of Arylsulfatase K protein.
Formulation	Liquid in PBS containing 50% glycerol, 0.5% BSA and 0.02% sodium azide.
Storage	Store at -20°C. Avoid repeated freeze-thaw cycles.
Protein Name	Arylsulfatase K
Gene Name	ARSK
Cellular localization	Secreted . Lysosome .
Purification	The antibody was affinity-purified from rabbit antiserum by affinity-chromatography using epitope-specific immunogen.
Clonality	Polyclonal
Concentration	1 mg/ml
Observed band	62kD
Human Gene ID	153642
Human Swiss-Prot Number	Q6UWY0
Alternative Names	ARSK; TSULF; Arylsulfatase K; ASK; Telethon sulfatase
Background	Sulfatases (EC 3.1.5.6), such as ARSK, hydrolyze sulfate esters from sulfated steroids, carbohydrates, proteoglycans, and glycolipids. They are involved in hormone biosynthesis, modulation of cell signaling, and degradation of macromolecules (Sardiello et al.,



2005 [PubMed 16174644]).[supplied by OMIM, Mar 2008],

Western Blot analysis of K562 cells using Arylsulfatase K Polyclonal Antibody



Immunohistochemistry analysis of paraffin-embedded human breast carcinoma tissue, using ARSK Antibody. The picture on the right is blocked with the synthesized peptide.

