

# GUSBP1 rabbit pAb

Cat No.:ES4915

For research use only

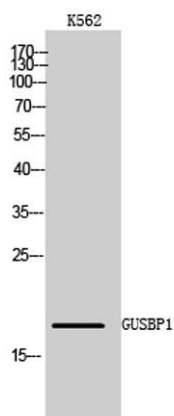
## Overview

Product Name	GUSBP1 rabbit pAb
Host species	Rabbit
Applications	WB;ELISA
Species Cross-Reactivity	Human;Rat;Mouse;
Recommended dilutions	Western Blot: 1/500 - 1/2000. ELISA: 1/40000. Not yet tested in other applications.
Immunogen	The antiserum was produced against synthesized peptide derived from human GUSBL1. AA range:51-100
Specificity	GUSBP1 Polyclonal Antibody detects endogenous levels of GUSBP1 protein.
Formulation	Liquid in PBS containing 50% glycerol, 0.5% BSA and 0.02% sodium azide.
Storage	Store at -20°C. Avoid repeated freeze-thaw cycles.
Protein Name	Putative beta-glucuronidase-like protein SMA3
Gene Name	GUSBP1
Cellular localization	
Purification	The antibody was affinity-purified from rabbit antiserum by affinity-chromatography using epitope-specific immunogen.
Clonality	Polyclonal
Concentration	1 mg/ml
Observed band	18kD
Human Gene ID	153561
Human Swiss-Prot Number	Q15486
Alternative Names	GUSBP1; SMA3; Putative beta-glucuronidase-like protein SMA3
Background	Binds GTP, GDP and GMP.

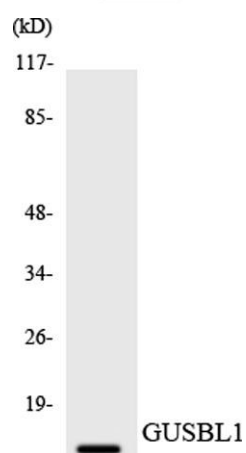




**ELK Biotechnology**



Western Blot analysis of K562 cells using GUSBP1  
Polyclonal Antibody



Western blot analysis of the lysates from HT-29 cells using  
GUSBL1 antibody.



+86-27-59760950

ELKbio@ELKbiotech.com

[www.elkbiotech.com](http://www.elkbiotech.com)

23-2, No.388 Gaoxin 2nd Road, Wuhan East Lake Hi-tech Development Zone, Hubei, P.R.C.