

Cathepsin G rabbit pAb

Cat No.:ES4900

For research use only

Overview

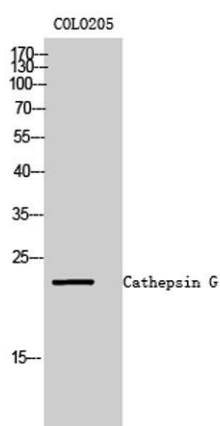
Product Name	Cathepsin G rabbit pAb
Host species	Rabbit
Applications	WB;ELISA
Species Cross-Reactivity	Human;Rat;Mouse;
Recommended dilutions	Western Blot: 1/500 - 1/2000. ELISA: 1/40000. Not yet tested in other applications.
Immunogen	The antiserum was produced against synthesized peptide derived from human Cathepsin G. AA range:67-116
Specificity	Cathepsin G Polyclonal Antibody detects endogenous levels of Cathepsin G protein.
Formulation	Liquid in PBS containing 50% glycerol, 0.5% BSA and 0.02% sodium azide.
Storage	Store at -20°C. Avoid repeated freeze-thaw cycles.
Protein Name	Cathepsin G
Gene Name	CTSG
Cellular localization	Cell membrane ; Peripheral membrane protein . Cytoplasmic granule . Secreted . Cytoplasm, cytosol . Lysosome . Nucleus . Secreted by activated neutrophils (PubMed:3390156). Detected in synovial fluid (PubMed:32144329). Localizes to lysosomes in B cells wh
Purification	The antibody was affinity-purified from rabbit antiserum by affinity-chromatography using epitope-specific immunogen.
Clonality	Polyclonal
Concentration	1 mg/ml
Observed band	22kD
Human Gene ID	1511
Human Swiss-Prot Number	P08311
Alternative Names	CTSG; Cathepsin G; CG
Background	The protein encoded by this gene, a member of the peptidase S1 protein family, is found in azurophil





granules of neutrophilic polymorphonuclear leukocytes. The encoded protease has a specificity similar to that of chymotrypsin C, and may participate in the killing and digestion of engulfed pathogens, and in connective tissue remodeling at sites of inflammation. In addition, the encoded protein is antimicrobial, with bacteriocidal activity against *S. aureus* and *N. gonorrhoeae*. Transcript variants utilizing alternative polyadenylation signals exist for this gene. [provided by RefSeq, Sep 2014],

Western Blot analysis of COLO205 cells using Cathepsin G Polyclonal Antibody



Western blot analysis of lysate from COLO cells, using Cathepsin G antibody.

