



Mob3C rabbit pAb

Cat No.:ES4885

For research use only

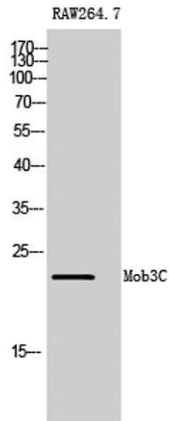
Overview

Product Name	Mob3C rabbit pAb
Host species	Rabbit
Applications	WB;IHC;IF;ELISA
Species Cross-Reactivity	Human;Mouse
Recommended dilutions	Western Blot: 1/500 - 1/2000. Immunohistochemistry: 1/100 - 1/300. ELISA: 1/40000. Not yet tested in other applications.
Immunogen	The antiserum was produced against synthesized peptide derived from human MOL2C. AA range:81-130
Specificity	Mob3C Polyclonal Antibody detects endogenous levels of Mob3C protein.
Formulation	Liquid in PBS containing 50% glycerol, 0.5% BSA and 0.02% sodium azide.
Storage	Store at -20°C. Avoid repeated freeze-thaw cycles.
Protein Name	MOB kinase activator 3C
Gene Name	MOB3C
Cellular localization	
Purification	The antibody was affinity-purified from rabbit antiserum by affinity-chromatography using epitope-specific immunogen.
Clonality	Polyclonal
Concentration	1 mg/ml
Observed band	22kD
Human Gene ID	148932
Human Swiss-Prot Number	Q70IA8
Alternative Names	MOB3C; MOBKL2C; MOB kinase activator 3C; Mob1 homolog 2C; Mps one binder kinase activator-like 2C
Background	The protein encoded by this gene is similar to the yeast Mob1 protein. Yeast Mob1 binds Mps1p, a protein kinase essential for spindle pole body duplication and mitotic checkpoint regulation. Alternatively spliced transcript variants encoding

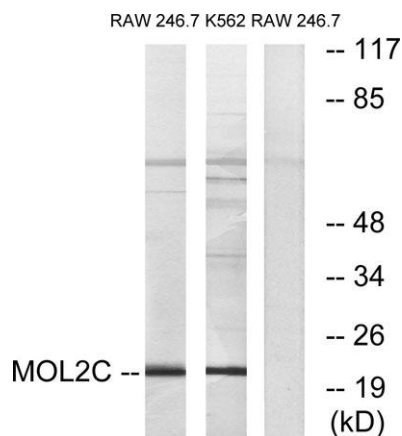
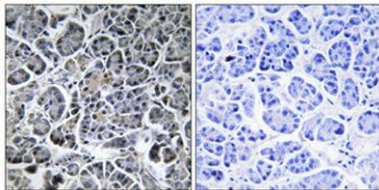


distinct isoforms have been observed. [provided by RefSeq, Jul 2008],

Western Blot analysis of RAW264.7 cells using Mob3C Polyclonal Antibody



Immunohistochemical analysis of paraffin-embedded Human pancreas. Antibody was diluted at 1:100(4° overnight). High-pressure and temperature Tris-EDTA,pH8.0 was used for antigen retrieval. Negative contrl (right) obtained from antibody was pre-absorbed b



Western blot analysis of lysates from RAW264.7 and K562 cells, using MOL2C Antibody. The lane on the right is blocked with the synthesized peptide.

