

TMC8 rabbit pAb

Cat No.:ES4875

For research use only

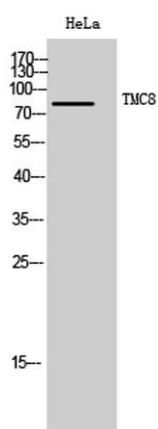
Overview

Product Name	TMC8 rabbit pAb
Host species	Rabbit
Applications	WB;IHC;IF;ELISA
Species Cross-Reactivity	Human;Mouse;Rat
Recommended dilutions	Western Blot: 1/500 - 1/2000. Immunohistochemistry: 1/100 - 1/300. ELISA: 1/5000. Not yet tested in other applications.
Immunogen	The antiserum was produced against synthesized peptide derived from human TMC8. AA range:601-650
Specificity	TMC8 Polyclonal Antibody detects endogenous levels of TMC8 protein.
Formulation	Liquid in PBS containing 50% glycerol, 0.5% BSA and 0.02% sodium azide.
Storage	Store at -20°C. Avoid repeated freeze-thaw cycles.
Protein Name	Transmembrane channel-like protein 8
Gene Name	TMC8
Cellular localization	Endoplasmic reticulum membrane ; Multi-pass membrane protein .
Purification	The antibody was affinity-purified from rabbit antiserum by affinity-chromatography using epitope-specific immunogen.
Clonality	Polyclonal
Concentration	1 mg/ml
Observed band	81kD
Human Gene ID	147138
Human Swiss-Prot Number	Q8IU68
Alternative Names	TMC8; EVER2; EVIN2; Transmembrane channel-like protein 8; Epidermodysplasia verruciformis protein 2
Background	Epidermodysplasia verruciformis (EV) is an autosomal recessive dermatosis characterized by abnormal susceptibility to human papillomaviruses





(HPVs) and a high rate of progression to squamous cell carcinoma on sun-exposed skin. EV is caused by mutations in either of two adjacent genes located on chromosome 17q25.3. Both of these genes encode integral membrane proteins that localize to the endoplasmic reticulum and are predicted to form transmembrane channels. This gene encodes a transmembrane channel-like protein with 8 predicted transmembrane domains and 3 leucine zipper motifs. [provided by RefSeq, Jul 2008],



Western Blot analysis of HeLa cells using TMC8 Polyclonal Antibody. Secondary antibody(catalog#:RS0002) was diluted at 1:20000

Immunohistochemistry analysis of paraffin-embedded human tonsil, using TMC8 Antibody. The picture on the right is blocked with the synthesized peptide.

