



CMTM2 rabbit pAb

Cat No.:ES4868

For research use only

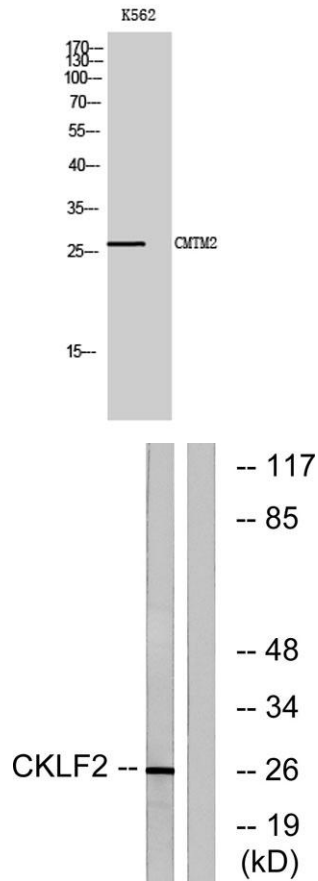
Overview

Product Name	CMTM2 rabbit pAb
Host species	Rabbit
Applications	WB;ELISA
Species Cross-Reactivity	Human;Rat;Mouse;
Recommended dilutions	Western Blot: 1/500 - 1/2000. ELISA: 1/40000. Not yet tested in other applications.
Immunogen	The antiserum was produced against synthesized peptide derived from human CKLF2. AA range:171-220
Specificity	CMTM2 Polyclonal Antibody detects endogenous levels of CMTM2 protein.
Formulation	Liquid in PBS containing 50% glycerol, 0.5% BSA and 0.02% sodium azide.
Storage	Store at -20°C. Avoid repeated freeze-thaw cycles.
Protein Name	CKLF-like MARVEL transmembrane domain-containing protein 2
Gene Name	CMTM2
Cellular localization	Membrane; Multi-pass membrane protein.
Purification	The antibody was affinity-purified from rabbit antiserum by affinity-chromatography using epitope-specific immunogen.
Clonality	Polyclonal
Concentration	1 mg/ml
Observed band	27kD
Human Gene ID	146225
Human Swiss-Prot Number	Q8TAZ6
Alternative Names	CMTM2; CKLFSF2; CKLF-like MARVEL transmembrane domain-containing protein 2; Chemokine-like factor superfamily member 2
Background	This gene belongs to the chemokine-like factor gene superfamily, a novel family that links the chemokine and the transmembrane 4 superfamilies of signaling molecules. The protein encoded by this gene may

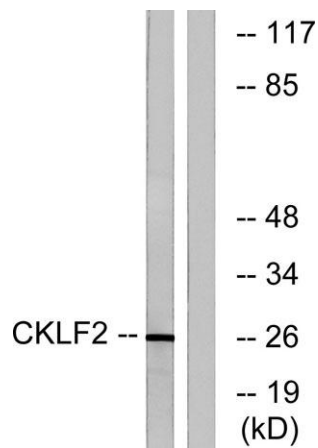


play an important role in testicular development.
[provided by RefSeq, Jul 2008],

Western Blot analysis of K562 cells using CMTM2
Polyclonal Antibody



Western blot analysis of lysates from K562 cells, using
CKLF2 Antibody. The lane on the right is blocked with the
synthesized peptide.



Western blot analysis of the lysates from COLO205 cells
using CKLF2 antibody.

