



Nek7 rabbit pAb

Cat No.:ES4823

For research use only

Overview

Product Name	Nek7 rabbit pAb
Host species	Rabbit
Applications	WB;IHC;IF;ELISA
Species Cross-Reactivity	Human;Mouse
Recommended dilutions	Western Blot: 1/500 - 1/2000. Immunohistochemistry: 1/100 - 1/300. ELISA: 1/40000. Not yet tested in other applications.
Immunogen	The antiserum was produced against synthesized peptide derived from human NEK7. AA range:101-150
Specificity	Nek7 Polyclonal Antibody detects endogenous levels of Nek7 protein.
Formulation	Liquid in PBS containing 50% glycerol, 0.5% BSA and 0.02% sodium azide.
Storage	Store at -20°C. Avoid repeated freeze-thaw cycles.
Protein Name	Serine/threonine-protein kinase Nek7
Gene Name	NEK7
Cellular localization	Nucleus . Cytoplasm . Cytoplasm, cytoskeleton, spindle pole . Cytoplasm, cytoskeleton, microtubule organizing center, centrosome . Present at centrosome throughout the cell cycle (PubMed:17586473). Also detected at spindle midzone of the anaphase cells an
Purification	The antibody was affinity-purified from rabbit antiserum by affinity-chromatography using epitope-specific immunogen.
Clonality	Polyclonal
Concentration	1 mg/ml
Observed band	35kD
Human Gene ID	140609
Human Swiss-Prot Number	Q8TDX7
Alternative Names	NEK7; Serine/threonine-protein kinase Nek7; Never in mitosis A-related kinase 7; NimA-related protein

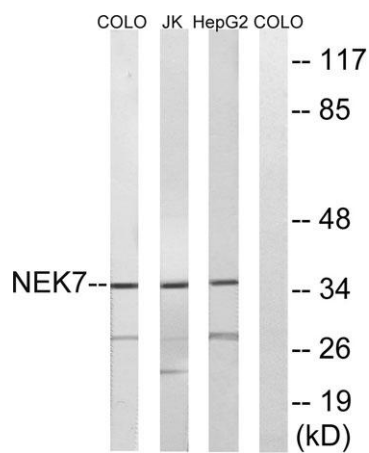
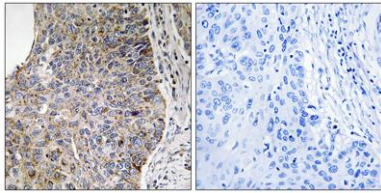


Background

kinase 7

NIMA-related kinases share high amino acid sequence identity with the gene product of the *Aspergillus nidulans* 'never in mitosis A' gene, which controls initiation of mitosis.[supplied by OMIM, Jul 2002],

Immunohistochemistry analysis of paraffin-embedded human lung carcinoma tissue, using NEK7 Antibody. The picture on the right is blocked with the synthesized peptide.



Western blot analysis of lysates from HepG2, Jurkat, and COLO cells, using NEK7 Antibody. The lane on the right is blocked with the synthesized peptide.

