

GPR119 rabbit pAb

Cat No.:ES4819

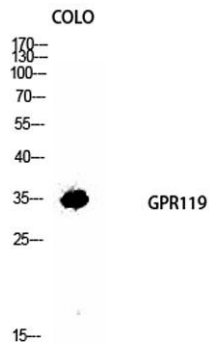
For research use only

Overview

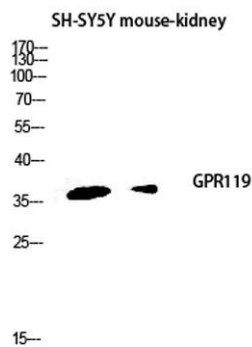
| | |
|--------------------------|---|
| Product Name | GPR119 rabbit pAb |
| Host species | Rabbit |
| Applications | WB;IF;ELISA |
| Species Cross-Reactivity | Human;Rat;Mouse; |
| Recommended dilutions | Western Blot: 1/500 - 1/2000. Immunofluorescence: 1/200 - 1/1000. ELISA: 1/10000. Not yet tested in other applications. |
| Immunogen | The antiserum was produced against synthesized peptide derived from human GPR119. AA range:186-235 |
| Specificity | GPR119 Polyclonal Antibody detects endogenous levels of GPR119 protein. |
| Formulation | Liquid in PBS containing 50% glycerol, 0.5% BSA and 0.02% sodium azide. |
| Storage | Store at -20°C. Avoid repeated freeze-thaw cycles. |
| Protein Name | Glucose-dependent insulintropic receptor |
| Gene Name | GPR119 |
| Cellular localization | Cell membrane; Multi-pass membrane protein. |
| Purification | The antibody was affinity-purified from rabbit antiserum by affinity-chromatography using epitope-specific immunogen. |
| Clonality | Polyclonal |
| Concentration | 1 mg/ml |
| Observed band | 37kD |
| Human Gene ID | 139760 |
| Human Swiss-Prot Number | Q8TDV5 |
| Alternative Names | GPR119; Glucose-dependent insulintropic receptor; G-protein coupled receptor 119 |
| Background | This gene encodes a member of the rhodopsin subfamily of G-protein-coupled receptors that is expressed in the pancreas and gastrointestinal tract. The encoded protein is activated by lipid amides including lysophosphatidylcholine and |



oleoylethanolamide and may be involved in glucose homeostasis. This protein is a potential drug target in the treatment of type 2 diabetes.[provided by RefSeq, Jan 2010],

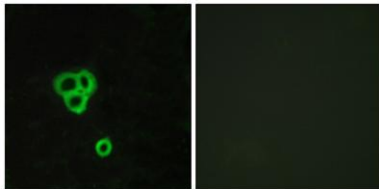


Western Blot analysis of COLO cells using GPR119
Polyclonal Antibody diluted at 1:1000



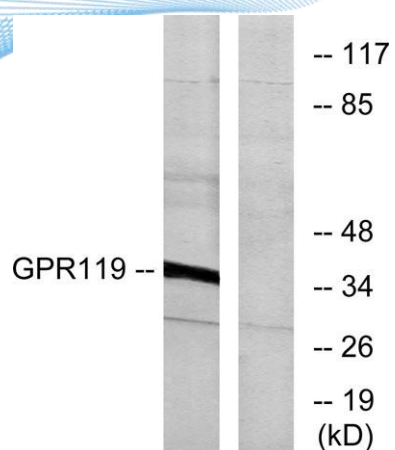
Western blot analysis of SH-SY5Y mouse-kidney lysis using
GPR119 antibody. Antibody was diluted at 1:1000

Immunofluorescence analysis of MCF7 cells, using
GPR119 Antibody. The picture on the right is blocked with
the synthesized peptide.





ELK Biotechnology



Western blot analysis of lysates from K562 cells, using GPR119 Antibody. The lane on the right is blocked with the synthesized peptide.



+86-27-59760950

ELKbio@ELKbiotech.com

www.elkbiotech.com

23-2, No.388 Gaoxin 2nd Road,Wuhan East Lake Hi-tech Development Zone, Hubei , P.R.C