

Glycerate Kinase rabbit pAb

Cat No.:ES4764

For research use only

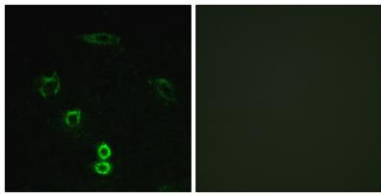
Overview

Product Name	Glycerate Kinase rabbit pAb
Host species	Rabbit
Applications	WB;IHC;IF;ELISA
Species Cross-Reactivity	Human;Mouse;Rat
Recommended dilutions	Western Blot: 1/500 - 1/2000. Immunohistochemistry: 1/100 - 1/300. Immunofluorescence: 1/200 - 1/1000. ELISA: 1/20000. Not yet tested in other applications.
Immunogen	The antiserum was produced against synthesized peptide derived from human GLCKT. AA range:101-150
Specificity	Glycerate Kinase Polyclonal Antibody detects endogenous levels of Glycerate Kinase protein.
Formulation	Liquid in PBS containing 50% glycerol, 0.5% BSA and 0.02% sodium azide.
Storage	Store at -20°C. Avoid repeated freeze-thaw cycles.
Protein Name	Glycerate kinase
Gene Name	GLYCKT
Cellular localization	[Isoform 1]: Cytoplasm .; [Isoform 2]: Cytoplasm. Mitochondrion .
Purification	The antibody was affinity-purified from rabbit antiserum by affinity-chromatography using epitope-specific immunogen.
Clonality	Polyclonal
Concentration	1 mg/ml
Observed band	60kD
Human Gene ID	132158
Human Swiss-Prot Number	Q8IVS8
Alternative Names	GLYCKT; HBEBP4; LP5910; Glycerate kinase; HBeAg-binding protein 4
Background	This locus encodes a member of the glycerate kinase type-2 family. The encoded enzyme catalyzes the phosphorylation of (R)-glycerate and may be

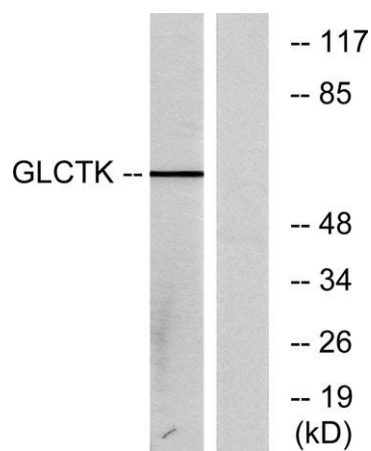
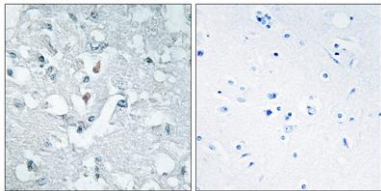


involved in serine degradation and fructose metabolism. Decreased activity of the encoded enzyme may be associated with the disease D-glyceric aciduria. Alternatively spliced transcript variants have been described. [provided by RefSeq, Jan 2009],

Immunofluorescence analysis of A549 cells, using GLCTK Antibody. The picture on the right is blocked with the synthesized peptide.



Immunohistochemistry analysis of paraffin-embedded human brain tissue, using GLCTK Antibody. The picture on the right is blocked with the synthesized peptide.

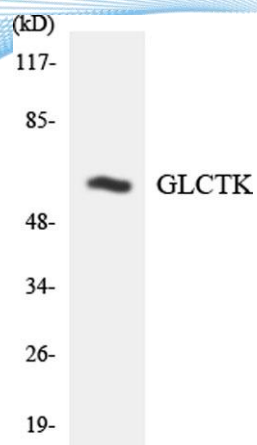


Western blot analysis of lysates from NIH/3T3 cells, using GLCTK Antibody. The lane on the right is blocked with the synthesized peptide.





ELK Biotechnology



Western blot analysis of the lysates from HUVEC cells using GLCTK antibody.



+86-27-59760950

ELKbio@ELKbiotech.com

www.elkbiotech.com

23-2, No.388 Gaoxin 2nd Road, Wuhan East Lake Hi-tech Development Zone, Hubei, P.R.C.