



COL6A2 rabbit pAb

Cat No.:ES4747

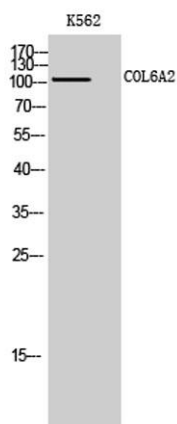
For research use only

Overview

Product Name	COL6A2 rabbit pAb
Host species	Rabbit
Applications	WB;IHC;IF;ELISA
Species Cross-Reactivity	Human;Mouse;Monkey
Recommended dilutions	Western Blot: 1/500 - 1/2000. Immunohistochemistry: 1/100 - 1/300. Immunofluorescence: 1/200 - 1/1000. ELISA: 1/10000. Not yet tested in other applications.
Immunogen	The antiserum was produced against synthesized peptide derived from human Collagen VI alpha2. AA range:691-740
Specificity	COL6A2 Polyclonal Antibody detects endogenous levels of COL6A2 protein.
Formulation	Liquid in PBS containing 50% glycerol, 0.5% BSA and 0.02% sodium azide.
Storage	Store at -20°C. Avoid repeated freeze-thaw cycles.
Protein Name	Collagen alpha-2(VI) chain
Gene Name	COL6A2
Cellular localization	Secreted, extracellular space, extracellular matrix . Membrane ; Peripheral membrane protein . Recruited on membranes by CSPG4.
Purification	The antibody was affinity-purified from rabbit antiserum by affinity-chromatography using epitope-specific immunogen.
Clonality	Polyclonal
Concentration	1 mg/ml
Observed band	109kD
Human Gene ID	1292
Human Swiss-Prot Number	P12110
Alternative Names	COL6A2; Collagen alpha-2(VI) chain
Background	This gene encodes one of the three alpha chains of type VI collagen, a beaded filament collagen found in most connective tissues. The product of this gene

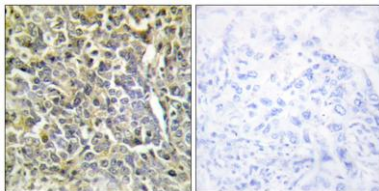


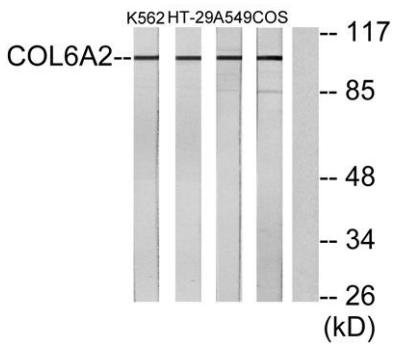
contains several domains similar to von Willebrand Factor type A domains. These domains have been shown to bind extracellular matrix proteins, an interaction that explains the importance of this collagen in organizing matrix components. Mutations in this gene are associated with Bethlem myopathy and Ullrich scleroatonic muscular dystrophy. Three transcript variants have been identified for this gene. [provided by RefSeq, Jul 2008],



Western Blot analysis of K562 cells using COL6A2 Polyclonal Antibody

Immunohistochemistry analysis of paraffin-embedded human lung carcinoma tissue, using Collagen VI alpha2 Antibody. The picture on the right is blocked with the synthesized peptide.





Western blot analysis of lysates from K562, A549, HT-29, and COS7 cells, using Collagen VI alpha2 Antibody. The lane on the right is blocked with the synthesized peptide.

