

# COL4A5 rabbit pAb

Cat No.:ES4740

For research use only

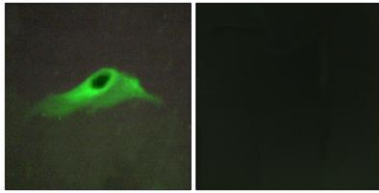
## Overview

Product Name	COL4A5 rabbit pAb
Host species	Rabbit
Applications	IHC;IF;WB;ELISA
Species Cross-Reactivity	Human;Mouse
Recommended dilutions	WB 1:500-2000 Immunohistochemistry: 1/100 - 1/300. Immunofluorescence: 1/200 - 1/1000. ELISA: 1/10000. Not yet tested in other applications.
Immunogen	The antiserum was produced against synthesized peptide derived from human Collagen IV alpha5. AA range:21-70
Specificity	COL4A5 Polyclonal Antibody detects endogenous levels of COL4A5 protein.
Formulation	Liquid in PBS containing 50% glycerol, 0.5% BSA and 0.02% sodium azide.
Storage	Store at -20°C. Avoid repeated freeze-thaw cycles.
Protein Name	Collagen alpha-5(IV) chain
Gene Name	COL4A5
Cellular localization	Secreted, extracellular space, extracellular matrix, basement membrane.
Purification	The antibody was affinity-purified from rabbit antiserum by affinity-chromatography using epitope-specific immunogen.
Clonality	Polyclonal
Concentration	1 mg/ml
Observed band	160kD
Human Gene ID	1287
Human Swiss-Prot Number	P29400
Alternative Names	COL4A5; Collagen alpha-5(IV) chain
Background	This gene encodes one of the six subunits of type IV collagen, the major structural component of basement membranes. Mutations in this gene are associated with X-linked Alport syndrome, also known as hereditary nephritis. Like the other

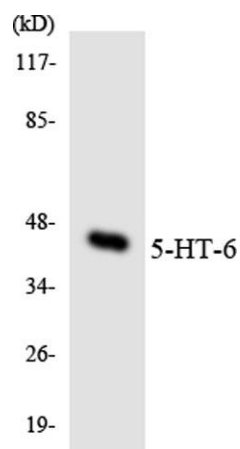
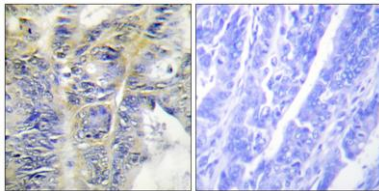


members of the type IV collagen gene family, this gene is organized in a head-to-head conformation with another type IV collagen gene so that each gene pair shares a common promoter. Alternatively spliced transcript variants have been identified for this gene. [provided by RefSeq, Aug 2010],

Immunofluorescence analysis of HeLa cells, using Collagen IV alpha5 Antibody. The picture on the right is blocked with the synthesized peptide.



Immunohistochemistry analysis of paraffin-embedded human colon carcinoma tissue, using Collagen IV alpha5 Antibody. The picture on the right is blocked with the synthesized peptide.



Western blot analysis of the lysates from COLO205 cells using 5-HT-6 antibody.

