

# COL3A1 rabbit pAb

Cat No.:ES4731

For research use only

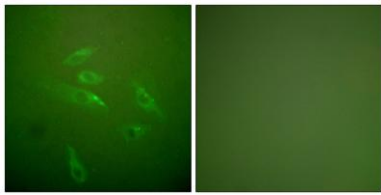
## Overview

Product Name	COL3A1 rabbit pAb
Host species	Rabbit
Applications	IHC;IF;ELISA
Species Cross-Reactivity	Human;Mouse;Rat
Recommended dilutions	Immunohistochemistry: 1/100 - 1/300. Immunofluorescence: 1/200 - 1/1000. ELISA: 1/10000. Not yet tested in other applications.
Immunogen	The antiserum was produced against synthesized peptide derived from human Collagen III. AA range:81-130
Specificity	COL3A1 Polyclonal Antibody detects endogenous levels of COL3A1 protein.
Formulation	Liquid in PBS containing 50% glycerol, 0.5% BSA and 0.02% sodium azide.
Storage	Store at -20°C. Avoid repeated freeze-thaw cycles.
Protein Name	Collagen alpha-1(III) chain
Gene Name	COL3A1
Cellular localization	Secreted, extracellular space, extracellular matrix .
Purification	The antibody was affinity-purified from rabbit antiserum by affinity-chromatography using epitope-specific immunogen.
Clonality	Polyclonal
Concentration	1 mg/ml
Observed band	
Human Gene ID	1281
Human Swiss-Prot Number	P02461
Alternative Names	COL3A1; Collagen alpha-1(III) chain
Background	collagen type III alpha 1 chain(COL3A1) Homo sapiens This gene encodes the pro-alpha1 chains of type III collagen, a fibrillar collagen that is found in extensible connective tissues such as skin, lung, uterus, intestine and the vascular system, frequently in association with type I collagen.



Mutations in this gene are associated with Ehlers-Danlos syndrome types IV, and with aortic and arterial aneurysms. Two transcripts, resulting from the use of alternate polyadenylation signals, have been identified for this gene. [provided by R. Dalglish, Feb 2008],

Immunofluorescence analysis of HeLa cells, using Collagen III Antibody. The picture on the right is blocked with the synthesized peptide.



Immunohistochemistry analysis of paraffin-embedded human pancreas tissue, using Collagen III Antibody. The picture on the right is blocked with the synthesized peptide.

