

TPH2 rabbit pAb

Cat No.:ES4690

For research use only

Overview

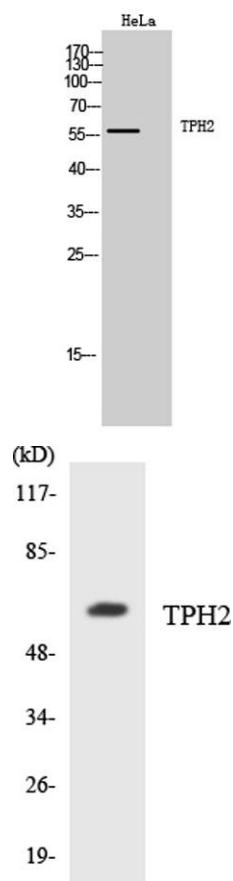
Product Name	TPH2 rabbit pAb
Host species	Rabbit
Applications	WB;ELISA
Species Cross-Reactivity	Human;Mouse;Rat;Monkey
Recommended dilutions	Western Blot: 1/500 - 1/2000. ELISA: 1/40000. Not yet tested in other applications.
Immunogen	The antiserum was produced against synthesized peptide derived from human TPH2. AA range:4-53
Specificity	TPH2 Polyclonal Antibody detects endogenous levels of TPH2 protein.
Formulation	Liquid in PBS containing 50% glycerol, 0.5% BSA and 0.02% sodium azide.
Storage	Store at -20°C. Avoid repeated freeze-thaw cycles.
Protein Name	Tryptophan 5-hydroxylase 2
Gene Name	TPH2
Cellular localization	cytosol,neuron projection,
Purification	The antibody was affinity-purified from rabbit antiserum by affinity-chromatography using epitope-specific immunogen.
Clonality	Polyclonal
Concentration	1 mg/ml
Observed band	56kD
Human Gene ID	121278
Human Swiss-Prot Number	Q8IWU9
Alternative Names	TPH2; NTPH; Tryptophan 5-hydroxylase 2; Neuronal tryptophan hydroxylase; Tryptophan 5-monooxygenase 2
Background	This gene encodes a member of the pterin-dependent aromatic acid hydroxylase family. The encoded protein catalyzes the first and rate limiting step in the biosynthesis of serotonin, an important hormone and neurotransmitter. Mutations in this gene may be associated with





psychiatric diseases such as bipolar affective disorder and major depression. [provided by RefSeq, Feb 2016],

Western Blot analysis of HeLa cells using TPH2 Polyclonal Antibody. Secondary antibody(catalog#:RS0002) was diluted at 1:20000



Western blot analysis of the lysates from HUVECcells using TPH2 antibody.

