



Cks2 rabbit pAb

Cat No.:ES4660

For research use only

Overview

| | |
|--------------------------|--|
| Product Name | Cks2 rabbit pAb |
| Host species | Rabbit |
| Applications | IHC;IF;ELISA |
| Species Cross-Reactivity | Human;Mouse |
| Recommended dilutions | Immunohistochemistry: 1/100 - 1/300. ELISA: 1/20000. Not yet tested in other applications. |
| Immunogen | The antiserum was produced against synthesized peptide derived from human CKS2. AA range:1-50 |
| Specificity | Cks2 Polyclonal Antibody detects endogenous levels of Cks2 protein. |
| Formulation | Liquid in PBS containing 50% glycerol, 0.5% BSA and 0.02% sodium azide. |
| Storage | Store at -20°C. Avoid repeated freeze-thaw cycles. |
| Protein Name | Cyclin-dependent kinases regulatory subunit 2 |
| Gene Name | CKS2 |
| Cellular localization | cyclin-dependent protein kinase holoenzyme complex,SCF ubiquitin ligase complex, |
| Purification | The antibody was affinity-purified from rabbit antiserum by affinity-chromatography using epitope-specific immunogen. |
| Clonality | Polyclonal |
| Concentration | 1 mg/ml |
| Observed band | |
| Human Gene ID | 1164 |
| Human Swiss-Prot Number | P33552 |
| Alternative Names | CKS2; Cyclin-dependent kinases regulatory subunit 2; CKS-2 |
| Background | CDC28 protein kinase regulatory subunit 2(CKS2) Homo sapiens CKS2 protein binds to the catalytic subunit of the cyclin dependent kinases and is essential for their biological function. The CKS2 mRNA is found to be expressed in different patterns through the cell cycle in HeLa cells, which |

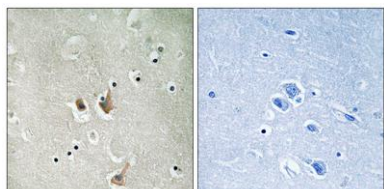




ELK Biotechnology

reflects specialized role for the encoded protein.
[provided by RefSeq, Jul 2008],

Immunohistochemistry analysis of paraffin-embedded human brain tissue, using CKS2 Antibody. The picture on the right is blocked with the synthesized peptide.



+86-27-59760950

ELKbio@ELKbiotech.com

www.elkbiotech.com

23-2, No.388 Gaoxin 2nd Road,Wuhan East Lake Hi-tech Development Zone, Hubei , P.R.C