



# AChR $\alpha$ 1 rabbit pAb

Cat No.:ES4640

For research use only

## Overview

Product Name	AChR $\alpha$ 1 rabbit pAb
Host species	Rabbit
Applications	IHC;IF;ELISA
Species Cross-Reactivity	Human;Mouse;Rat
Recommended dilutions	Immunohistochemistry: 1/100 - 1/300. ELISA: 1/10000. Not yet tested in other applications.
Immunogen	The antiserum was produced against synthesized peptide derived from human AChR $\alpha$ 1. AA range:168-217
Specificity	AChR $\alpha$ 1 Polyclonal Antibody detects endogenous levels of AChR $\alpha$ 1 protein.
Formulation	Liquid in PBS containing 50% glycerol, 0.5% BSA and 0.02% sodium azide.
Storage	Store at -20°C. Avoid repeated freeze-thaw cycles.
Protein Name	Acetylcholine receptor subunit alpha
Gene Name	CHRNA1
Cellular localization	Cell junction, synapse, postsynaptic cell membrane ; Multi-pass membrane protein . Cell membrane ; Multi-pass membrane protein .
Purification	The antibody was affinity-purified from rabbit antiserum by affinity-chromatography using epitope-specific immunogen.
Clonality	Polyclonal
Concentration	1 mg/ml
Observed band	
Human Gene ID	1134
Human Swiss-Prot Number	P02708
Alternative Names	CHRNA1; ACHRA; CHNRA; Acetylcholine receptor subunit alpha
Background	The muscle acetylcholine receptor consists of 5 subunits of 4 different types: 2 alpha subunits and 1 each of the beta, gamma, and delta subunits. This gene encodes an alpha subunit that plays a role in

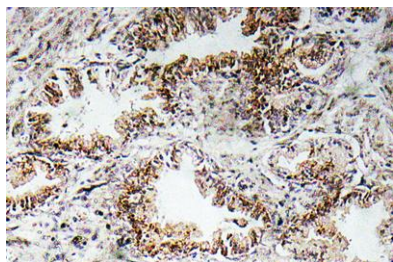




**ELK Biotechnology**

acetylcholine binding/channel gating. Alternatively spliced transcript variants encoding different isoforms have been identified. [provided by RefSeq, Nov 2012],

Immunohistochemistry analysis of AChR $\alpha$ 1 antibody in paraffin-embedded human prostate carcinoma tissue.



+86-27-59760950

[ELKbio@ELKbiotech.com](mailto:ELKbio@ELKbiotech.com)

[www.elkbiotech.com](http://www.elkbiotech.com)

23-2, No.388 Gaoxin 2nd Road, Wuhan East Lake Hi-tech Development Zone, Hubei, P.R.C.