



VPS26B rabbit pAb

Cat No.:ES4632

For research use only

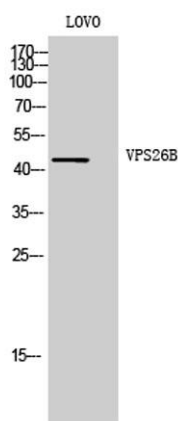
Overview

Product Name	VPS26B rabbit pAb
Host species	Rabbit
Applications	WB;ELISA
Species Cross-Reactivity	Human;Mouse
Recommended dilutions	Western Blot: 1/500 - 1/2000. ELISA: 1/10000. Not yet tested in other applications.
Immunogen	The antiserum was produced against synthesized peptide derived from human VPS26B. AA range:231-280
Specificity	VPS26B Polyclonal Antibody detects endogenous levels of VPS26B protein.
Formulation	Liquid in PBS containing 50% glycerol, 0.5% BSA and 0.02% sodium azide.
Storage	Store at -20°C. Avoid repeated freeze-thaw cycles.
Protein Name	Vacuolar protein sorting-associated protein 26B
Gene Name	VPS26B
Cellular localization	Cytoplasm . Membrane; Peripheral membrane protein . Early endosome . Late endosome . Localizes to early and late endosomal structures (By similarity). .
Purification	The antibody was affinity-purified from rabbit antiserum by affinity-chromatography using epitope-specific immunogen.
Clonality	Polyclonal
Concentration	1 mg/ml
Observed band	45kD
Human Gene ID	112936
Human Swiss-Prot Number	Q4G0F5
Alternative Names	VPS26B; Vacuolar protein sorting-associated protein 26B; Vesicle protein sorting 26B
Background	function:Probable component of the retromer complex, a complex required to retrieve lysosomal enzyme receptors (IGF2R and M6PR) from

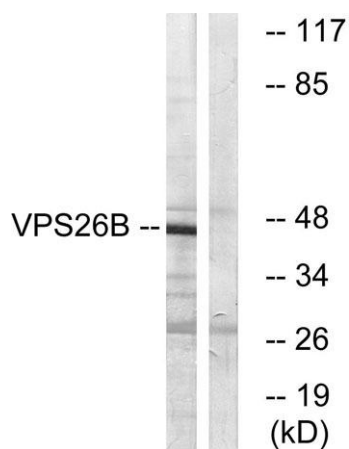




endosomes to the trans-Golgi network.,PTM:Phosphorylated upon DNA damage, probably by ATM or ATR.,similarity:Belongs to the VPS26 family.,subcellular location:Does not localize to endosomes.,subunit:Probable component of the retromer complex composed of VPS26 (VPS26A or VPS26B), VPS29, VPS35, SNX1 and SNX2. Interacts directly with VPS35.,



Western Blot analysis of LOVO cells using VPS26B Polyclonal Antibody. Secondary antibody(catalog#:RS0002) was diluted at 1:20000



Western blot analysis of lysates from LOVO cells, using VPS26B Antibody. The lane on the right is blocked with the synthesized peptide.

