

DNA pol γ 2 rabbit pAb

Cat No.:ES4622

For research use only

Overview

Product Name	DNA pol γ 2 rabbit pAb
Host species	Rabbit
Applications	IHC;IF;ELISA
Species Cross-Reactivity	Human;Rat;Mouse;
Recommended dilutions	Immunohistochemistry: 1/100 - 1/300. ELISA: 1/20000. Not yet tested in other applications.
Immunogen	The antiserum was produced against synthesized peptide derived from human POLG2. AA range:291-340
Specificity	DNA pol γ 2 Polyclonal Antibody detects endogenous levels of DNA pol γ 2 protein.
Formulation	Liquid in PBS containing 50% glycerol, 0.5% BSA and 0.02% sodium azide.
Storage	Store at -20°C. Avoid repeated freeze-thaw cycles.
Protein Name	DNA polymerase subunit gamma-2 mitochondrial
Gene Name	POLG2
Cellular localization	Mitochondrion.
Purification	The antibody was affinity-purified from rabbit antiserum by affinity-chromatography using epitope-specific immunogen.
Clonality	Polyclonal
Concentration	1 mg/ml
Observed band	
Human Gene ID	11232
Human Swiss-Prot Number	Q9UHN1
Alternative Names	POLG2; MTPOLB; DNA polymerase subunit gamma-2; mitochondrial; DNA polymerase gamma accessory 55 kDa subunit; p55; Mitochondrial DNA polymerase accessory subunit; MtPolB; PolG-beta
Background	This gene encodes the processivity subunit of the mitochondrial DNA polymerase gamma. The encoded protein forms a heterotrimer containing one catalytic subunit and two processivity subunits.

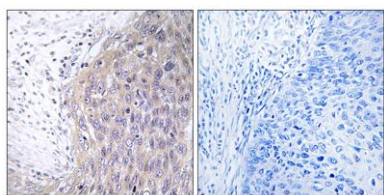




ELK Biotechnology

This protein enhances DNA binding and promotes processive DNA synthesis. Mutations in this gene result in autosomal dominant progressive external ophthalmoplegia with mitochondrial DNA deletions.[provided by RefSeq, Sep 2009],

Immunohistochemistry analysis of paraffin-embedded human cervix carcinoma tissue, using POLG2 Antibody. The picture on the right is blocked with the synthesized peptide.



+86-27-59760950

ELKbio@ELKbiotech.com

www.elkbiotech.com

23-2, No.388 Gaoxin 2nd Road,Wuhan East Lake Hi-tech Development Zone, Hubei , P.R.C