



# CYB561D2 rabbit pAb

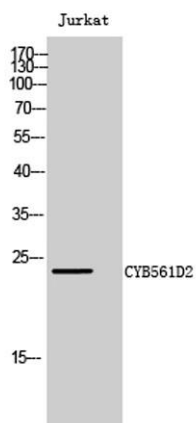
Cat No.:ES4588

For research use only

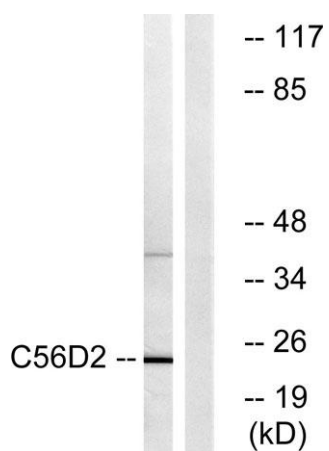
## Overview

<b>Product Name</b>	CYB561D2 rabbit pAb
<b>Host species</b>	Rabbit
<b>Applications</b>	WB;ELISA
<b>Species Cross-Reactivity</b>	Human;Rat;Mouse;
<b>Recommended dilutions</b>	Western Blot: 1/500 - 1/2000. ELISA: 1/20000. Not yet tested in other applications.
<b>Immunogen</b>	The antiserum was produced against synthesized peptide derived from human C56D2. AA range:55-104
<b>Specificity</b>	CYB561D2 Polyclonal Antibody detects endogenous levels of CYB561D2 protein.
<b>Formulation</b>	Liquid in PBS containing 50% glycerol, 0.5% BSA and 0.02% sodium azide.
<b>Storage</b>	Store at -20°C. Avoid repeated freeze-thaw cycles.
<b>Protein Name</b>	Cytochrome b561 domain-containing protein 2
<b>Gene Name</b>	CYB561D2
<b>Cellular localization</b>	Endoplasmic reticulum membrane ; Multi-pass membrane protein . Cytoplasmic vesicle membrane ; Multi-pass membrane protein .
<b>Purification</b>	The antibody was affinity-purified from rabbit antiserum by affinity-chromatography using epitope-specific immunogen.
<b>Clonality</b>	Polyclonal
<b>Concentration</b>	1 mg/ml
<b>Observed band</b>	24kD
<b>Human Gene ID</b>	11068
<b>Human Swiss-Prot Number</b>	O14569
<b>Alternative Names</b>	CYB561D2; 101F6; LUCA12.2; Cytochrome b561 domain-containing protein 2; Putative tumor suppressor protein 101F6
<b>Background</b>	cofactor: Binds 2 heme groups non-covalently.,similarity: Contains 1 cytochrome b561 domain.,





Western Blot analysis of Jurkat cells using CYB561D2 Polyclonal Antibody



Western blot analysis of lysates from Jurkat cells, using C56D2 Antibody. The lane on the right is blocked with the synthesized peptide.

