

PDLIM5 (phospho Tyr251) rabbit pAb

Cat No.:ES4519

For research use only

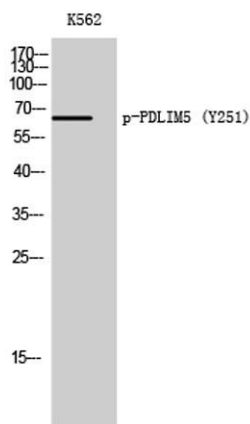
Overview

Product Name	PDLIM5 (phospho Tyr251) rabbit pAb
Host species	Rabbit
Applications	WB;ELISA;IHC
Species Cross-Reactivity	Human;Rat;Mouse;
Recommended dilutions	WB 1:500-2000;IHC-p 1:50-300; ELISA 2000-20000
Immunogen	Synthesized phospho-peptide around the phosphorylation site of human PDLIM5 (phospho Tyr251)
Specificity	Phospho-PDLIM5 (Y251) Polyclonal Antibody detects endogenous levels of PDLIM5 protein only when phosphorylated at Y251.
Formulation	Liquid in PBS containing 50% glycerol, 0.5% BSA and 0.02% sodium azide.
Storage	Store at -20°C. Avoid repeated freeze-thaw cycles.
Protein Name	PDZ and LIM domain protein 5
Gene Name	PDLIM5
Cellular localization	Cell junction, synapse, postsynaptic density . Cell junction, synapse, presynapse . Cell junction, synapse, postsynapse . Cytoplasm, cytosol . Detected both at presynaptic and postsynaptic sites, exclusively at excitatory synapses, but not inhibitory synapses, in hippocampal neurons. .
Purification	The antibody was affinity-purified from rabbit antiserum by affinity-chromatography using epitope-specific immunogen.
Clonality	Polyclonal
Concentration	1 mg/ml
Observed band	64kD
Human Gene ID	10611
Human Swiss-Prot Number	Q96HC4
Alternative Names	PDLIM5; ENH; L9; PDZ and LIM domain protein 5; Enigma homolog; Enigma-like PDZ and LIM domains protein

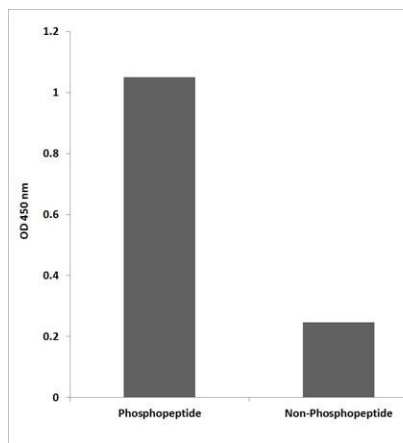


Background

This gene encodes a member of a family of proteins that possess a 100-amino acid PDZ domain at the N terminus and one to three LIM domains at the C-terminus. This family member functions as a scaffold protein that tethers protein kinases to the Z-disk in striated muscles. It is thought to function in cardiomyocyte expansion and in restraining postsynaptic growth of excitatory synapses. Alternative splicing of this gene results in multiple transcript variants. [provided by RefSeq, Jan 2012],



Western Blot analysis of K562 cells using Phospho-PDLIM5 (Y251) Polyclonal Antibody

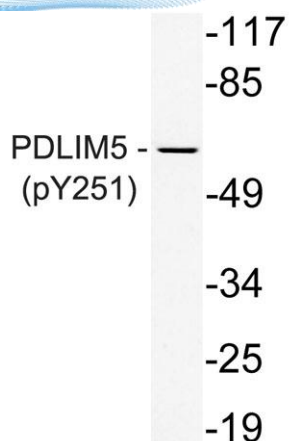


Enzyme-Linked Immunosorbent Assay (Phospho-ELISA) for Immunogen Phosphopeptide (Phospho-left) and Non-Phosphopeptide (Phospho-right), using PDLIM5 (Phospho-Tyr251) Antibody

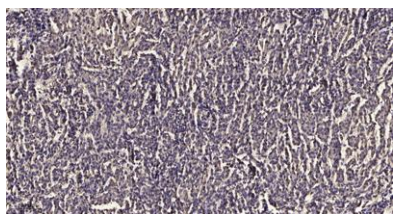




ELK Biotechnology



Western blot analysis of lysate from K562 cells, using phospho-PDLIM5 (Phospho-Tyr251) antibody.



Immunohistochemical analysis of paraffin-embedded human meningioma. 1, Antibody was diluted at 1:200(4° overnight). 2, Tris-EDTA,pH9.0 was used for antigen retrieval. 3,Secondary antibody was diluted at 1:200(room temperature, 45min).



+86-27-59760950

ELKbio@ELKbiotech.com

www.elkbiotech.com

23-2, No.388 Gaoxin 2nd Road,Wuhan East Lake Hi-tech Development Zone, Hubei , P.R.C