

# CRMP-3 rabbit pAb

Cat No.:ES4508

For research use only

## Overview

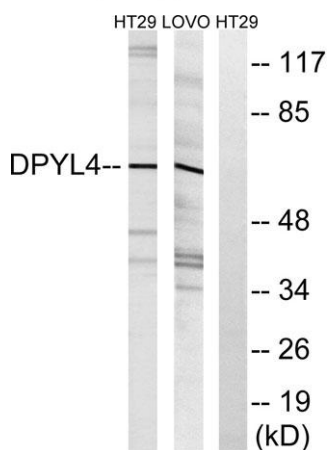
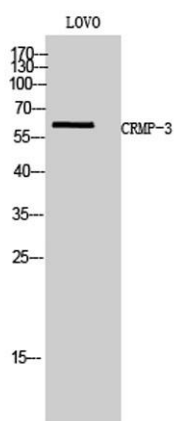
Product Name	CRMP-3 rabbit pAb
Host species	Rabbit
Applications	WB;ELISA
Species Cross-Reactivity	Human;Mouse;Rat
Recommended dilutions	Western Blot: 1/500 - 1/2000. ELISA: 1/10000. Not yet tested in other applications.
Immunogen	The antiserum was produced against synthesized peptide derived from human DPYSL4. AA range:91-140
Specificity	CRMP-3 Polyclonal Antibody detects endogenous levels of CRMP-3 protein.
Formulation	Liquid in PBS containing 50% glycerol, 0.5% BSA and 0.02% sodium azide.
Storage	Store at -20°C. Avoid repeated freeze-thaw cycles.
Protein Name	Dihydropyrimidinase-related protein 4
Gene Name	DPYSL4
Cellular localization	Cytoplasm .
Purification	The antibody was affinity-purified from rabbit antiserum by affinity-chromatography using epitope-specific immunogen.
Clonality	Polyclonal
Concentration	1 mg/ml
Observed band	62kD
Human Gene ID	10570
Human Swiss-Prot Number	O14531
Alternative Names	DPYSL4; CRMP3; ULIP4; Dihydropyrimidinase-related protein 4; DRP-4; Collapsin response mediator protein 3; CRMP-3; UNC33-like phosphoprotein 4; ULIP-4
Background	disease:Antibodies against post-translationally modified DPYSL4, also called anti-CV2 autoantibodies, are present in sera from patients with paraneoplastic neurological diseases (PND).





PND are disorders of the nervous system associated with various systemic cancers which are not a direct result of the tumor mass or metastasis, but attributed to remote effects of the cancer.,function:Necessary for signaling by class 3 semaphorins and subsequent remodeling of the cytoskeleton. Plays a role in axon guidance, neuronal growth cone collapse and cell migration.,PTM:Phosphorylated upon DNA damage, probably by ATM or ATR.,similarity:Belongs to the DHOase family. Hydantoinase/dihydropyrimidinase subfamily.,subunit:Homotetramer, and heterotetramer with CRMP1, DPYSL2, DPYSL3 or DPYSL5. Interacts with PLEXA1.,

Western Blot analysis of LOVO cells using CRMP-3 Polyclonal Antibody

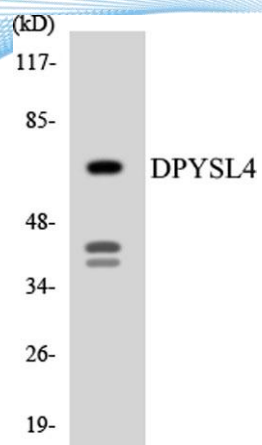


Western blot analysis of lysates from LOVO and HT-29 cells, using DPYSL4 Antibody. The lane on the right is blocked with the synthesized peptide.





**ELK Biotechnology**



Western blot analysis of the lysates from RAW264.7 cells using DPYSL4 antibody.



+86-27-59760950

[ELKbio@ELKbiotech.com](mailto:ELKbio@ELKbiotech.com)

[www.elkbiotech.com](http://www.elkbiotech.com)

23-2, No.388 Gaoxin 2nd Road, Wuhan East Lake Hi-tech Development Zone, Hubei, P.R.C.