



SEMA3C rabbit pAb

Cat No.:ES4492

For research use only

Overview

Product Name	SEMA3C rabbit pAb
Host species	Rabbit
Applications	WB;IHC;IF;ELISA
Species Cross-Reactivity	Human;Mouse;Rat
Recommended dilutions	Immunohistochemistry: 1/100 - 1/300. ELISA: 1/40000. Not yet tested in other applications.
Immunogen	The antiserum was produced against synthesized peptide derived from human SEMA3C. AA range:701-750
Specificity	SEMA3C Polyclonal Antibody detects endogenous levels of SEMA3C protein.
Formulation	Liquid in PBS containing 50% glycerol, 0.5% BSA and 0.02% sodium azide.
Storage	Store at -20°C. Avoid repeated freeze-thaw cycles.
Protein Name	Semaphorin-3C
Gene Name	SEMA3C
Cellular localization	Secreted.
Purification	The antibody was affinity-purified from rabbit antiserum by affinity-chromatography using epitope-specific immunogen.
Clonality	Polyclonal
Concentration	1 mg/ml
Observed band	
Human Gene ID	10512
Human Swiss-Prot Number	Q99985
Alternative Names	SEMA3C; SEMAE; Semaphorin-3C; Semaphorin-E; Sema E
Background	function:May be involved in diverse cell survival mechanisms.,similarity:Belongs to the semaphorin family.,similarity:Contains 1 Ig-like C2-type (immunoglobulin-like) domain.,similarity:Contains 1 PSI domain.,similarity:Contains 1 Sema domain.,tissue specificity:Expressed intensely in the

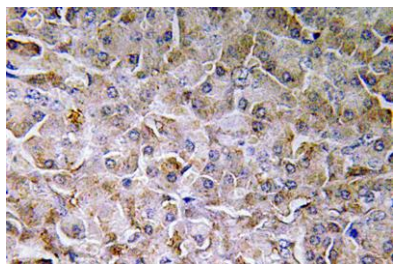




ELK Biotechnology

heart, skeletal muscle, colon, small intestine, ovary, testis, and prostate. Faint expression ubiquitously among other organs, including brain.,

Immunohistochemistry analysis of SEMA3C antibody in paraffin-embedded human pancreas tissue.



+86-27-59760950

ELKbio@ELKbiotech.com

www.elkbiotech.com

23-2, No.388 Gaoxin 2nd Road,Wuhan East Lake Hi-tech Development Zone, Hubei , P.R.C