

# C/EBP $\alpha$ rabbit pAb

Cat No.:ES4489

For research use only

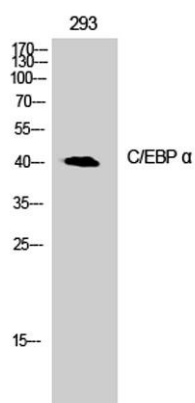
## Overview

Product Name	C/EBP $\alpha$ rabbit pAb
Host species	Rabbit
Applications	WB;IHC;IF;ELISA
Species Cross-Reactivity	Human;Mouse;Rat
Recommended dilutions	Western Blot: 1/500 - 1/2000. Immunohistochemistry: 1/100 - 1/300. ELISA: 1/5000. Not yet tested in other applications.
Immunogen	The antiserum was produced against synthesized peptide derived from human C/EBP- $\alpha$ . AA range:6-55
Specificity	C/EBP $\alpha$ Polyclonal Antibody detects endogenous levels of C/EBP $\alpha$ protein.
Formulation	Liquid in PBS containing 50% glycerol, 0.5% BSA and 0.02% sodium azide.
Storage	Store at -20°C. Avoid repeated freeze-thaw cycles.
Protein Name	CCAAT/enhancer-binding protein alpha
Gene Name	CEBPA
Cellular localization	Nucleus .; [Isoform 4]: Nucleus, nucleolus .
Purification	The antibody was affinity-purified from rabbit antiserum by affinity-chromatography using epitope-specific immunogen.
Clonality	Polyclonal
Concentration	1 mg/ml
Observed band	42kd
Human Gene ID	1050
Human Swiss-Prot Number	P49715
Alternative Names	CEBPA; CCAAT/enhancer-binding protein alpha; C/EBP alpha
Background	This intronless gene encodes a transcription factor that contains a basic leucine zipper (bZIP) domain and recognizes the CCAAT motif in the promoters of target genes. The encoded protein functions in homodimers and also heterodimers with



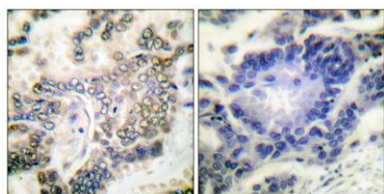


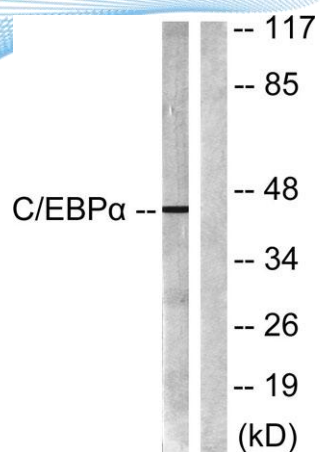
CCAAT/enhancer-binding proteins beta and gamma. Activity of this protein can modulate the expression of genes involved in cell cycle regulation as well as in body weight homeostasis. Mutation of this gene is associated with acute myeloid leukemia. The use of alternative in-frame non-AUG (GUG) and AUG start codons results in protein isoforms with different lengths. Differential translation initiation is mediated by an out-of-frame, upstream open reading frame which is located between the GUG and the first AUG start codons. [provided by RefSeq, Dec 2013],



Western Blot analysis of 293 cells using C/EBP  $\alpha$   
Polyclonal Antibody cells nucleus extracted by Minute TM  
Cytoplasmic and Nuclear Fractionation kit  
(SC-003, Inventbiotech, MN, USA).

Immunohistochemistry analysis of paraffin-embedded human lung carcinoma tissue, using C/EBP-alpha Antibody. The picture on the right is blocked with the synthesized peptide.





Western blot analysis of lysates from 293 cells, treated with Insulin 0.01U/ml 15', using C/EBP-alpha Antibody. The lane on the right is blocked with the synthesized peptide.

