



DLC-1 rabbit pAb

Cat No.:ES4467

For research use only

Overview

Product Name	DLC-1 rabbit pAb
Host species	Rabbit
Applications	IHC;IF;ELISA
Species Cross-Reactivity	Human;Mouse;Rat
Recommended dilutions	Immunohistochemistry: 1/100 - 1/300. Immunofluorescence: 1/200 - 1/1000. ELISA: 1/10000. Not yet tested in other applications.
Immunogen	The antiserum was produced against synthesized peptide derived from human RHG07. AA range:61-110
Specificity	DLC-1 Polyclonal Antibody detects endogenous levels of DLC-1 protein.
Formulation	Liquid in PBS containing 50% glycerol, 0.5% BSA and 0.02% sodium azide.
Storage	Store at -20°C. Avoid repeated freeze-thaw cycles.
Protein Name	Rho GTPase-activating protein 7
Gene Name	DLC1
Cellular localization	Cytoplasm. Cell junction, focal adhesion. Membrane; Peripheral membrane protein. Colocalizes with EF1A1 at actin-rich regions in the cell periphery.
Purification	The antibody was affinity-purified from rabbit antiserum by affinity-chromatography using epitope-specific immunogen.
Clonality	Polyclonal
Concentration	1 mg/ml
Observed band	
Human Gene ID	10395
Human Swiss-Prot Number	Q96QB1
Alternative Names	DLC1; ARHGAP7; KIAA1723; STARD12; Rho GTPase-activating protein 7; Deleted in liver cancer 1 protein; DLC-1; HP protein; Rho-type GTPase-activating protein 7; START





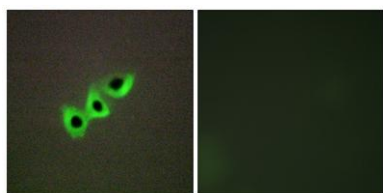
Background

domain-containing protein 12; StARD12;

StAR-related lipid transfer protein

This gene encodes a GTPase-activating protein (GAP) that is a member of the rhoGAP family of proteins which play a role in the regulation of small GTP-binding proteins. GAP family proteins participate in signaling pathways that regulate cell processes involved in cytoskeletal changes. This gene functions as a tumor suppressor gene in a number of common cancers, including prostate, lung, colorectal, and breast cancers. Multiple transcript variants due to alternative promoters and alternative splicing have been found for this gene.[provided by RefSeq, Apr 2010],

Immunofluorescence analysis of A549 cells, using RHG07 Antibody. The picture on the right is blocked with the synthesized peptide.



Immunohistochemistry analysis of paraffin-embedded human prostate carcinoma tissue, using RHG07 Antibody. The picture on the right is blocked with the synthesized peptide.

