

Rag B rabbit pAb

Cat No.:ES4464

For research use only

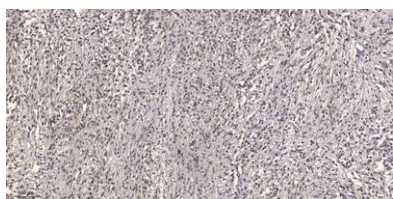
Overview

Product Name	Rag B rabbit pAb
Host species	Rabbit
Applications	IHC;IF;ELISA
Species Cross-Reactivity	Human;Mouse;Rat
Recommended dilutions	Immunohistochemistry: 1/100 - 1/300. ELISA: 1/40000. Not yet tested in other applications.
Immunogen	Synthesized peptide derived from Rag B . at AA range: 50-130
Specificity	Rag B Polyclonal Antibody detects endogenous levels of Rag B protein.
Formulation	Liquid in PBS containing 50% glycerol, 0.5% BSA and 0.02% sodium azide.
Storage	Store at -20°C. Avoid repeated freeze-thaw cycles.
Protein Name	Ras-related GTP-binding protein B
Gene Name	RRAGB
Cellular localization	Cytoplasm . Lysosome .
Purification	The antibody was affinity-purified from rabbit antiserum by affinity-chromatography using epitope-specific immunogen.
Clonality	Polyclonal
Concentration	1 mg/ml
Observed band	
Human Gene ID	10325
Human Swiss-Prot Number	Q5VZM2
Alternative Names	RRAGB; Ras-related GTP-binding protein B; Rag B; RagB
Background	Ras-homologous GTPases constitute a large family of signal transducers that alternate between an activated, GTP-binding state and an inactivated, GDP-binding state. These proteins represent cellular switches that are operated by GTP-exchange factors and factors that stimulate their intrinsic GTPase activity. All GTPases of the Ras superfamily have in





common the presence of six conserved motifs involved in GTP/GDP binding, three of which are phosphate-/magnesium-binding sites (PM1-PM3) and three of which are guanine nucleotide-binding sites (G1-G3). Transcript variants encoding distinct isoforms have been identified. [provided by RefSeq, Jul 2008],



Immunohistochemical analysis of paraffin-embedded human small intestinal carcinoma tissue. 1,primary Antibody was diluted at 1:200(4° overnight). 2, Sodium citrate pH 6.0 was used for antigen retrieval(>98°C,20min). 3,Secondary antibody was diluted at 1:2

